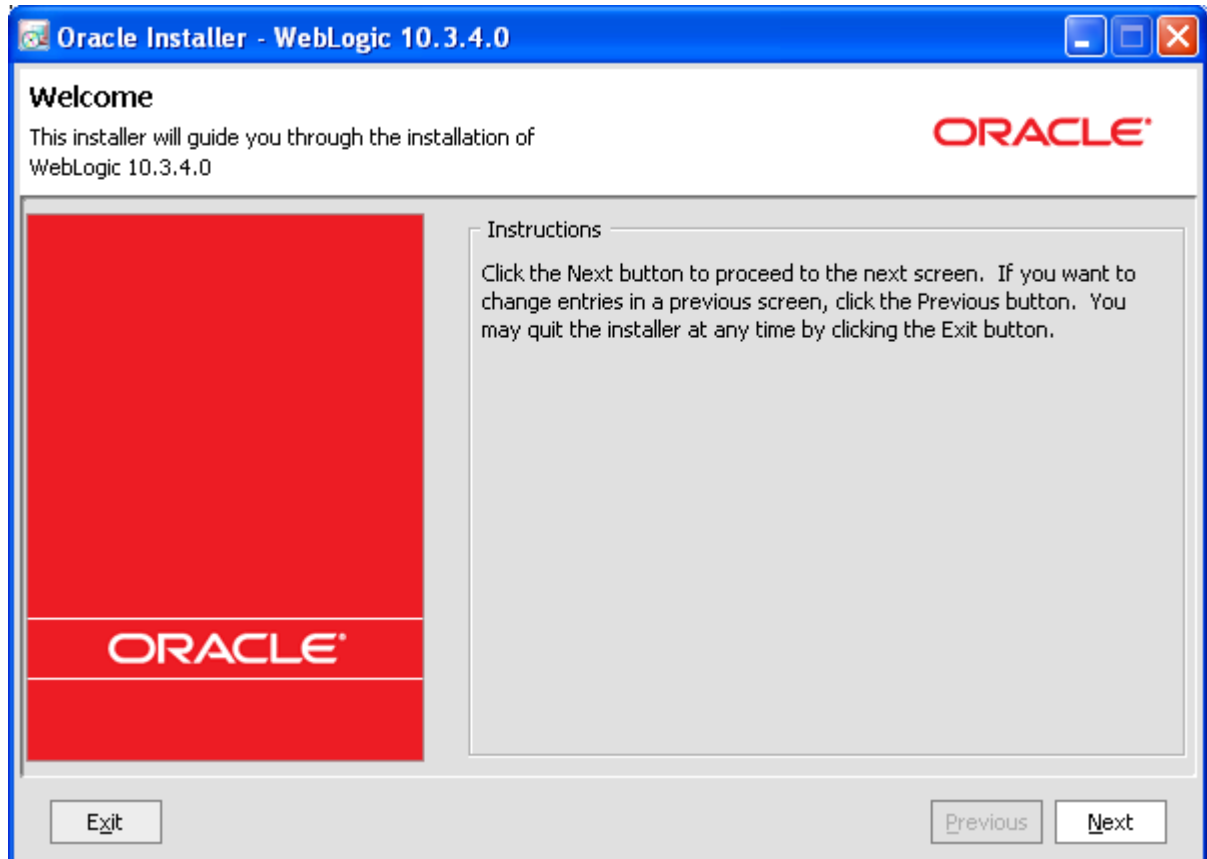
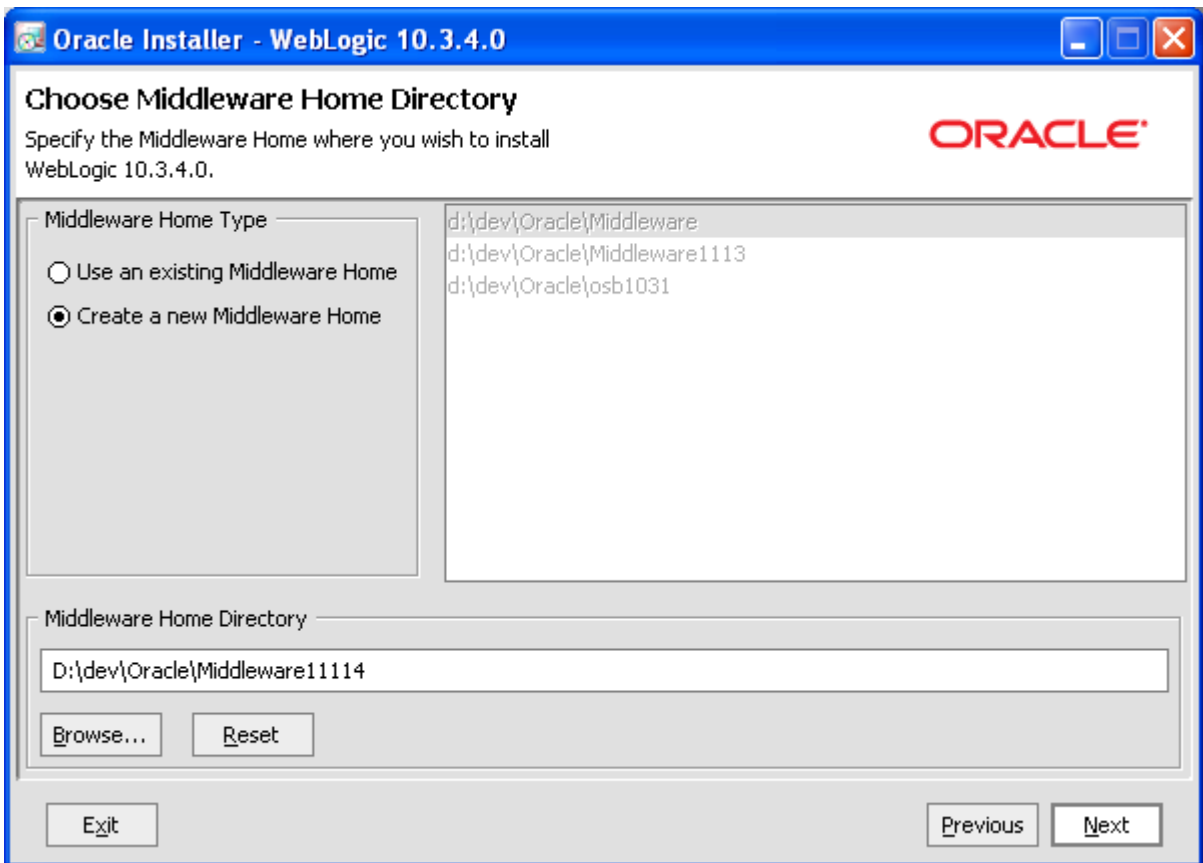


Weblogic 10.1.3.4 installation on Windows OS.

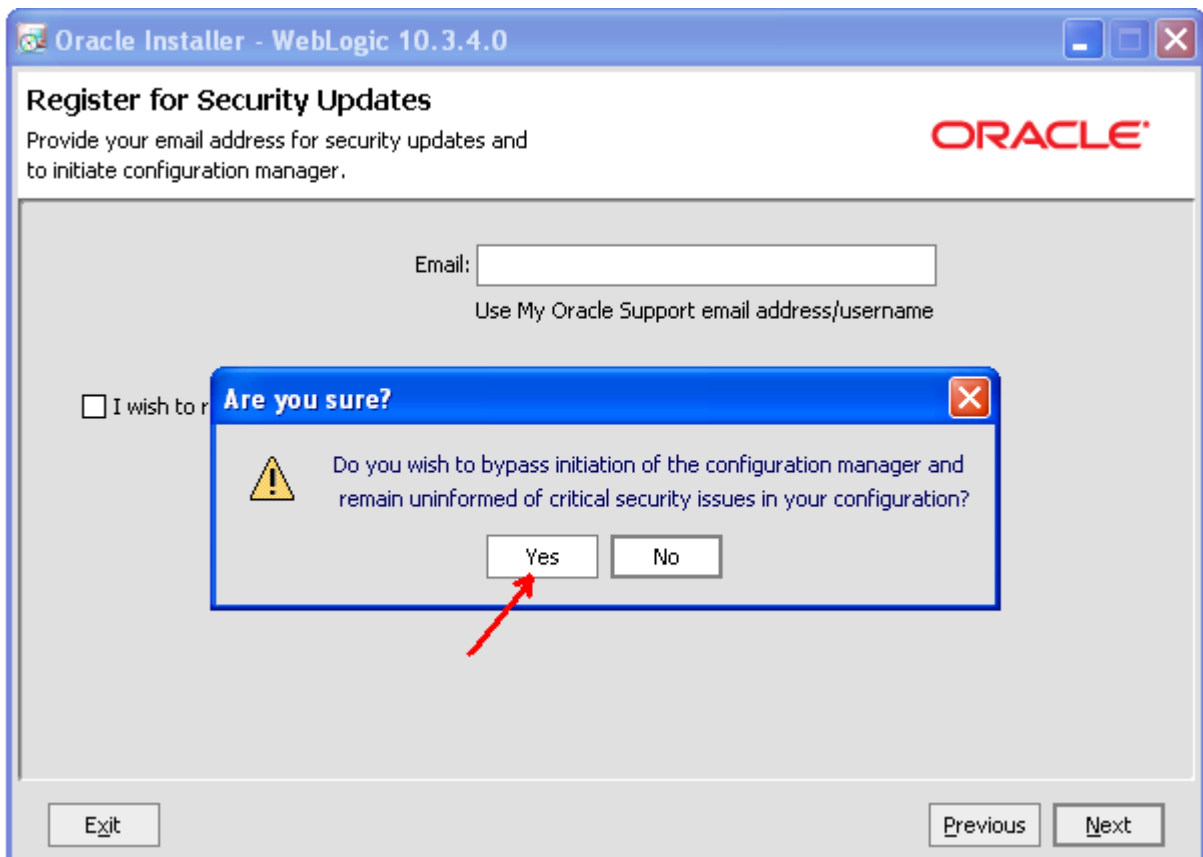
Double click on wls1034_oepe111161_win32.exe to start the installation. It takes some time to unpack the installer.



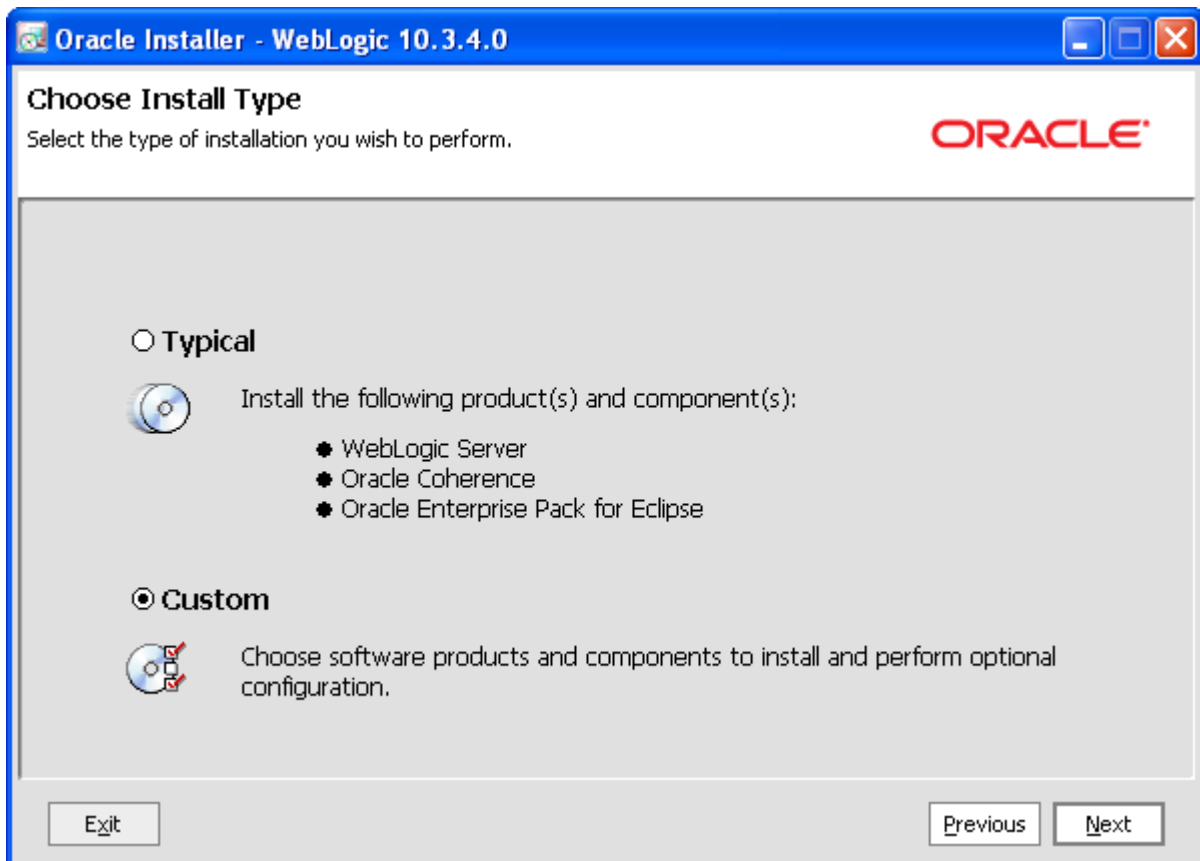
Click Next



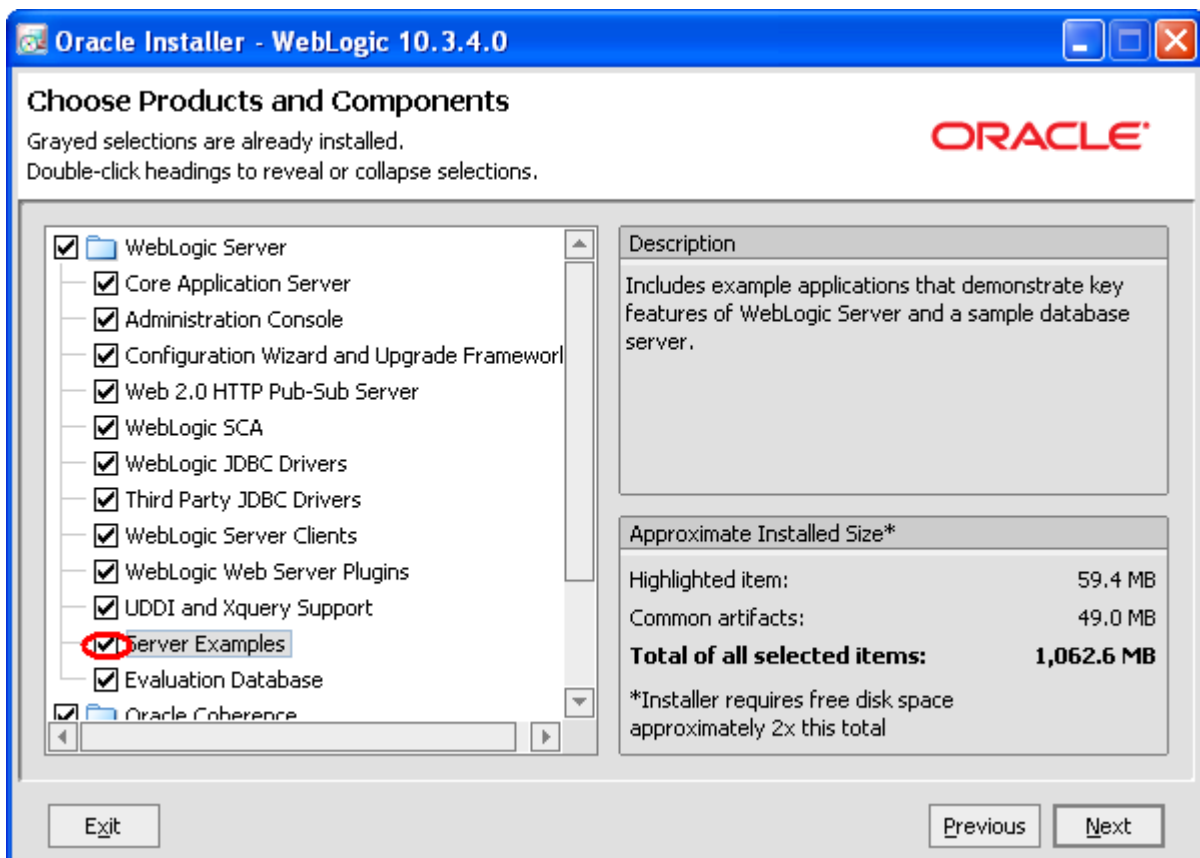
Choose the directory for the Middleware home on your machine. This directory will be referred as MIDDLEWARE_HOME through all the labs. Click **Next**



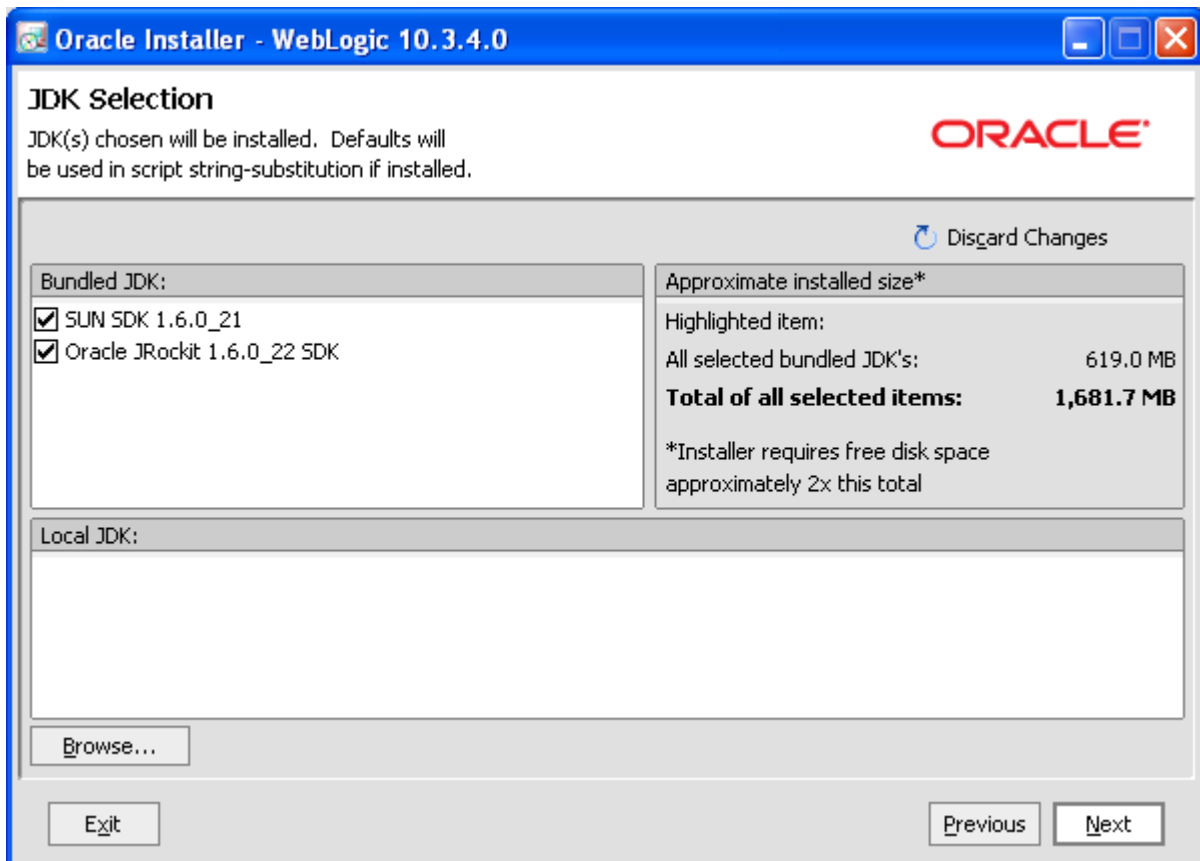
Uncheck "I wish..." checkbox, click **Yes** in the confirmation dialog, then click Next



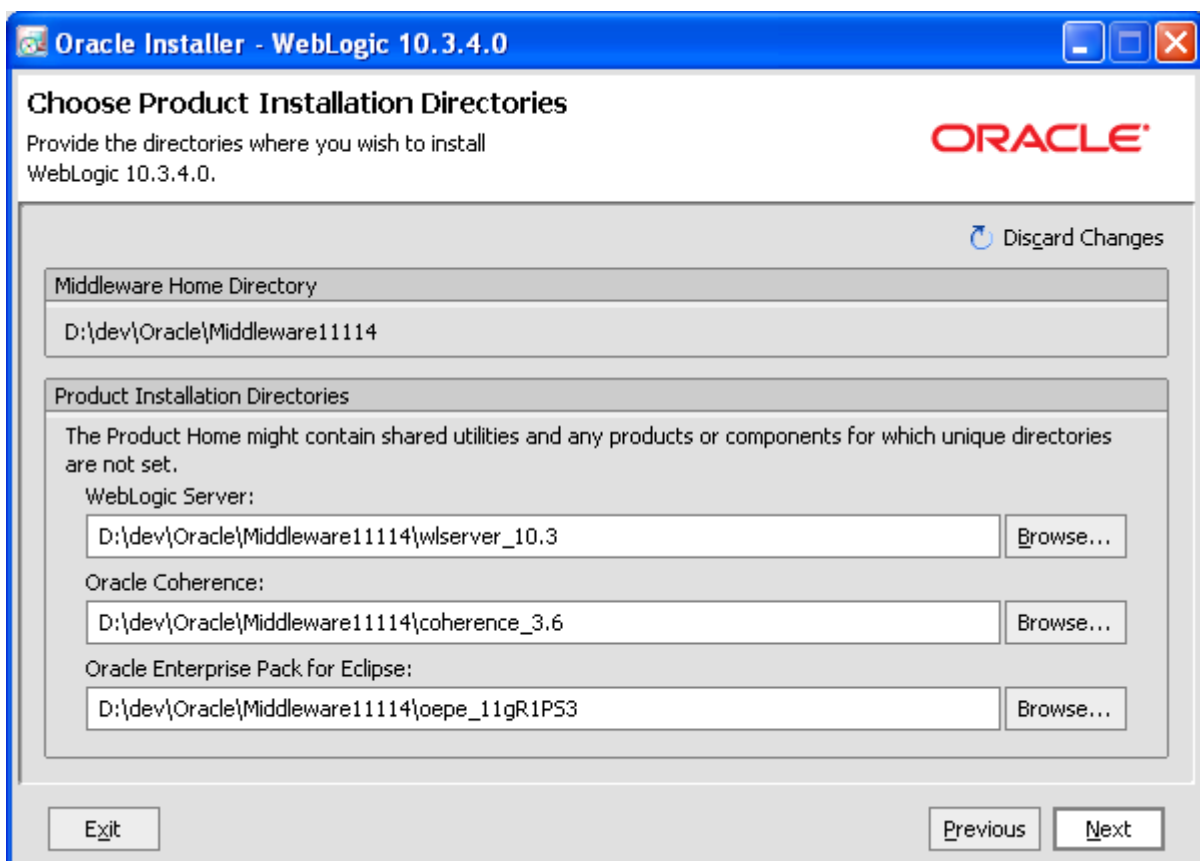
Select **Custom** installation type, click Next



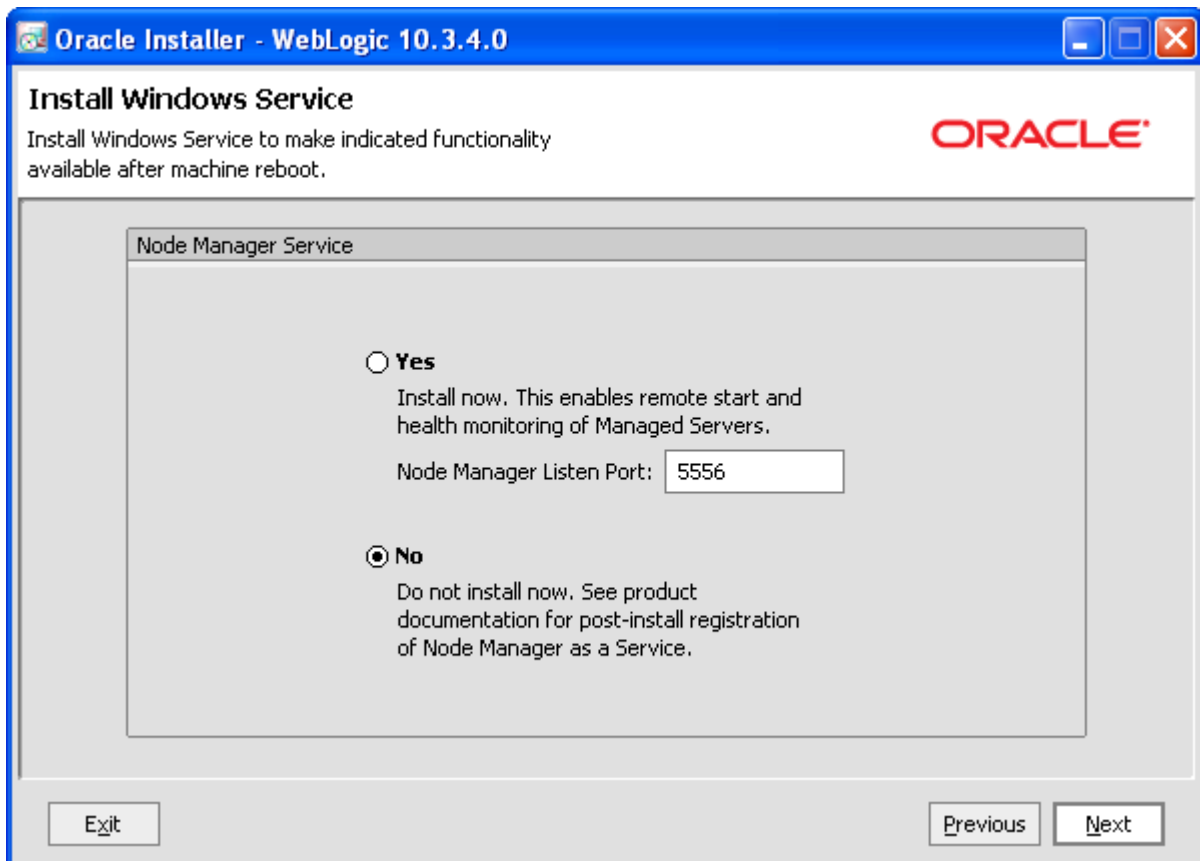
Check **Server Examples** checkbox in the components list, then click Next



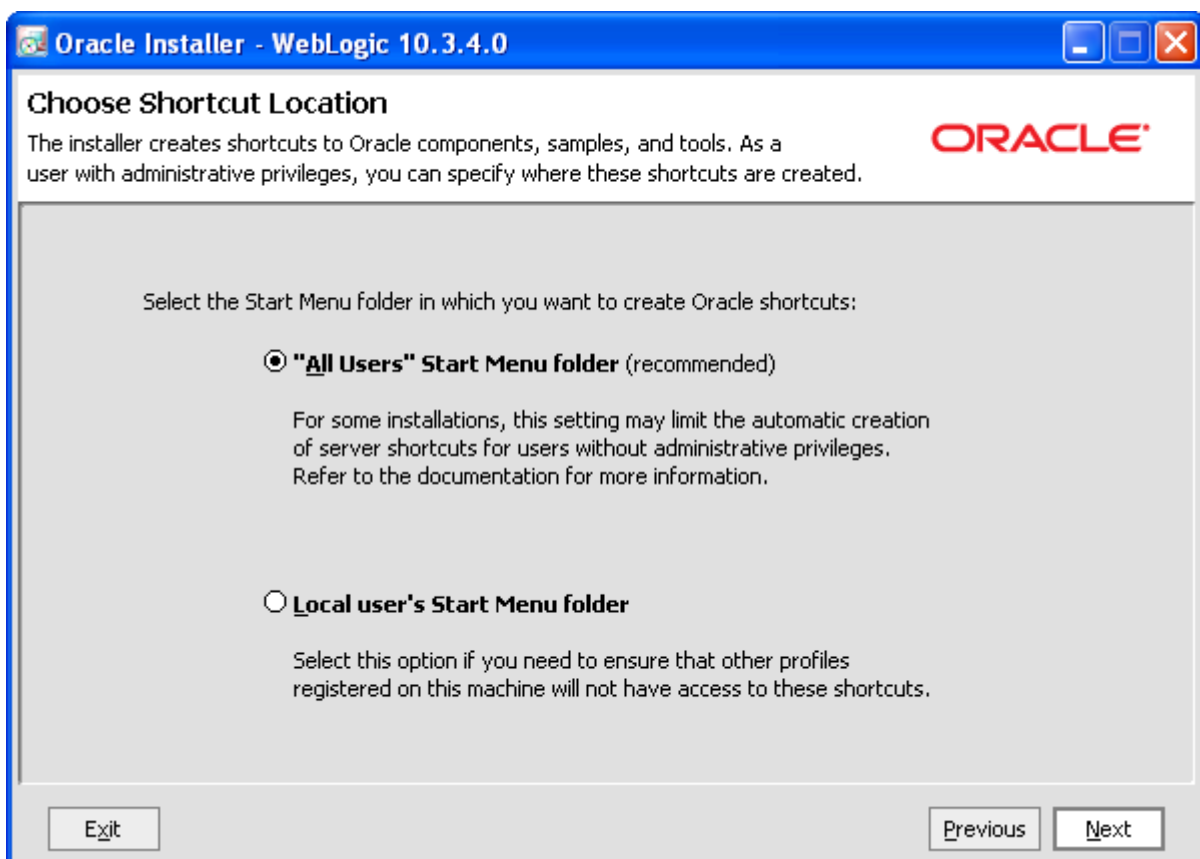
Click **Next**



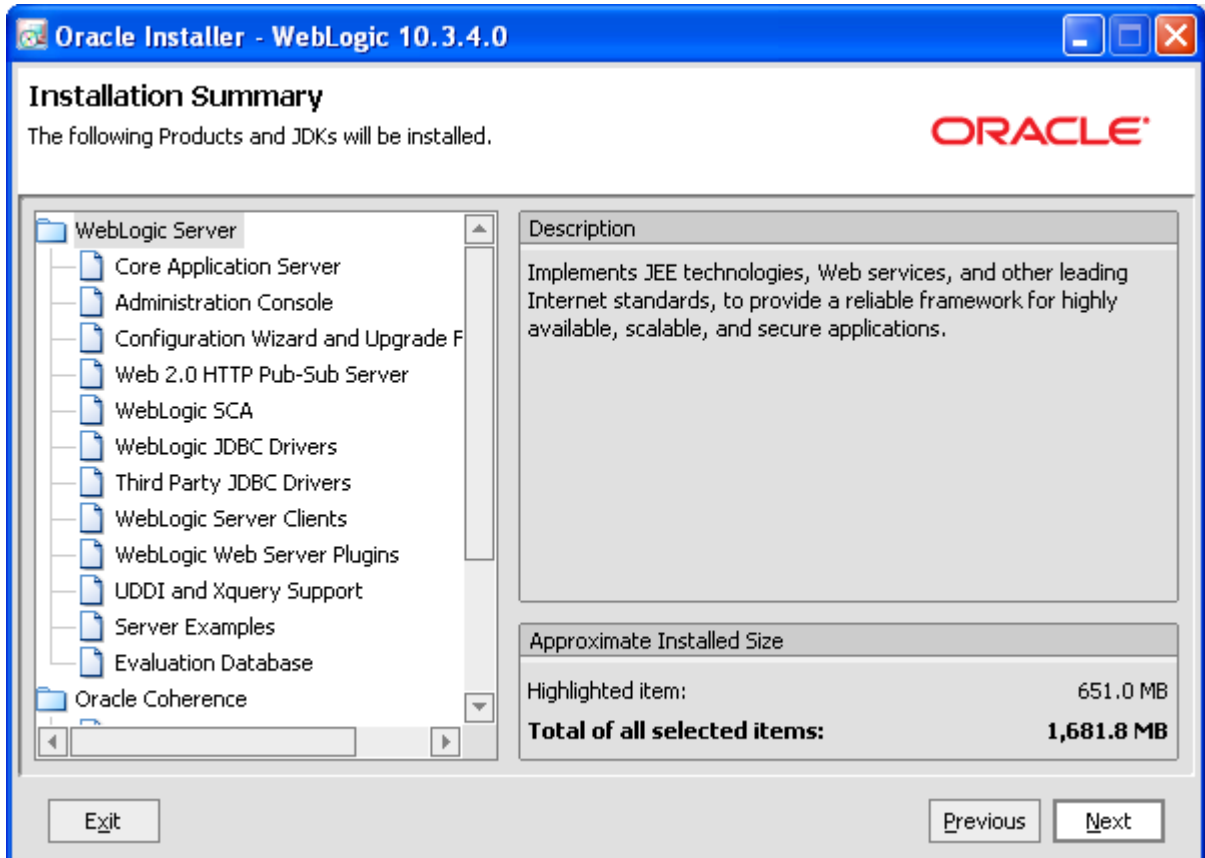
Leave product installation directories as is, click **Next**



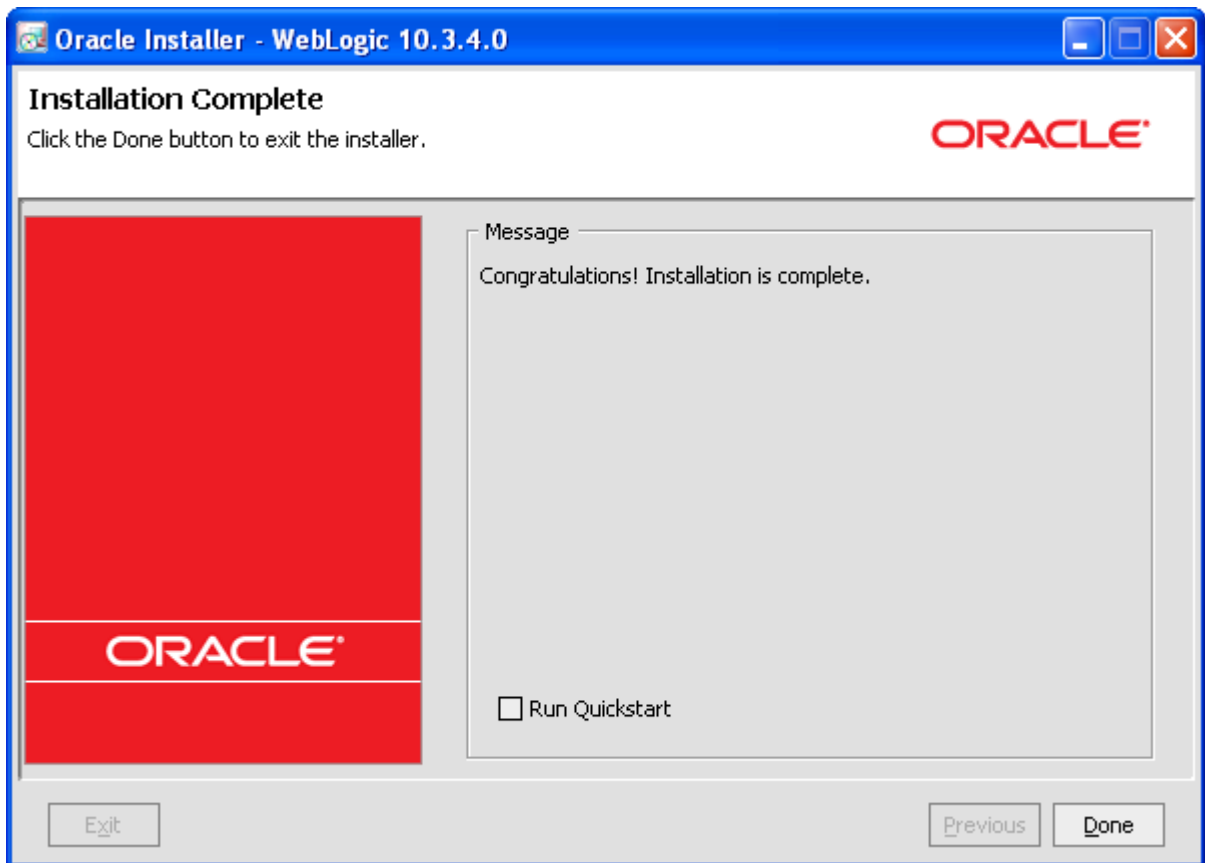
Do not install Node Manager as a Windows Service, click **Next**



Click **Next**



Click **Next** to start the installation process.



Uncheck **Run Quickstart** checkbox and press **Done** button.