

Exam Name:	Siebel 7.7 Analytics Data Warehouse Developer Professional Core Exam		
Exam Type	Oracle		
Exam Code:	1Z0-640	Total Questions:	99

Question: 1

What are some of the data-related challenges that create difficulties in making business decisions? Choose three.

- A. Too much irrelevant data for the job role
- B. A static reporting tool
- C. A business analytics tool that is too easy to master
- D. A reporting tool that allows the users to initiate their own query
- E. Ever increasing data volume

Answer: A, B, E

Question: 2

S_ASSET is a primary table and S_ASSET_WRNTY is a child table of S_ASSET. An auxiliary change capture process would consider rows from S_ASSET table changed when_____.

- A. rows in the S_ASSET table are actually changed
- B. related rows in the S_ASSET WRNTY table are changed
- C. a script sends a text message indicating that the S_ASSET table should be changed
- D. the S_ASSET_WRTY table is flagged for changes

Answer: B

Question: 3

What type of index improves query performance because both index and data segments are retrieved in one read?

- A. Clustered index
- B. B-Tree index
- C. Bitmap index
- D. JPEG index

Answer: A

Question: 4

Which of the following are the most important reasons why you would run Exception Reports? Choose two.

- A. To increase ETL performance
- B. To improve ETL mapping accuracy
- C. To avoid running too many incremental ETL runs
- D. To check the data integrity of the Siebel transactional database
- E. To skip unnecessary DAC task phases

Answer: A, D

Question: 5

What are the advantages of using a data warehouse to analyze data for business intelligence? Choose two.

- A. Data in a data warehouse is normalized
- B. There are fewer joins between data warehouse tables
- C. A data warehouse can bring data from multiple sources
- D. A data warehouse is best suited for entering, modifying, and deleting transactional data

Exam Name:	Siebel 7.7 Analytics Data Warehouse Developer Professional Core Exam		
Exam Type	Oracle		
Exam Code:	1Z0-640	Total Questions:	99

E. A data warehouse is best suited for time-critical data for real-time update, such as to customer data

Answer: B, C

Question: 6

Which is true of creating indexes?

- A. Staging tables typically do not require indexes
- B. Put filter conditions on all columns that ETL uses for dimensions and facts
- C. Defining indexes always slows down query performance
- D. DAC server can drop and then recreate query indexes if the DAC System Property DropAndCreateIndexes is set to False

Answer: A

Question: 7

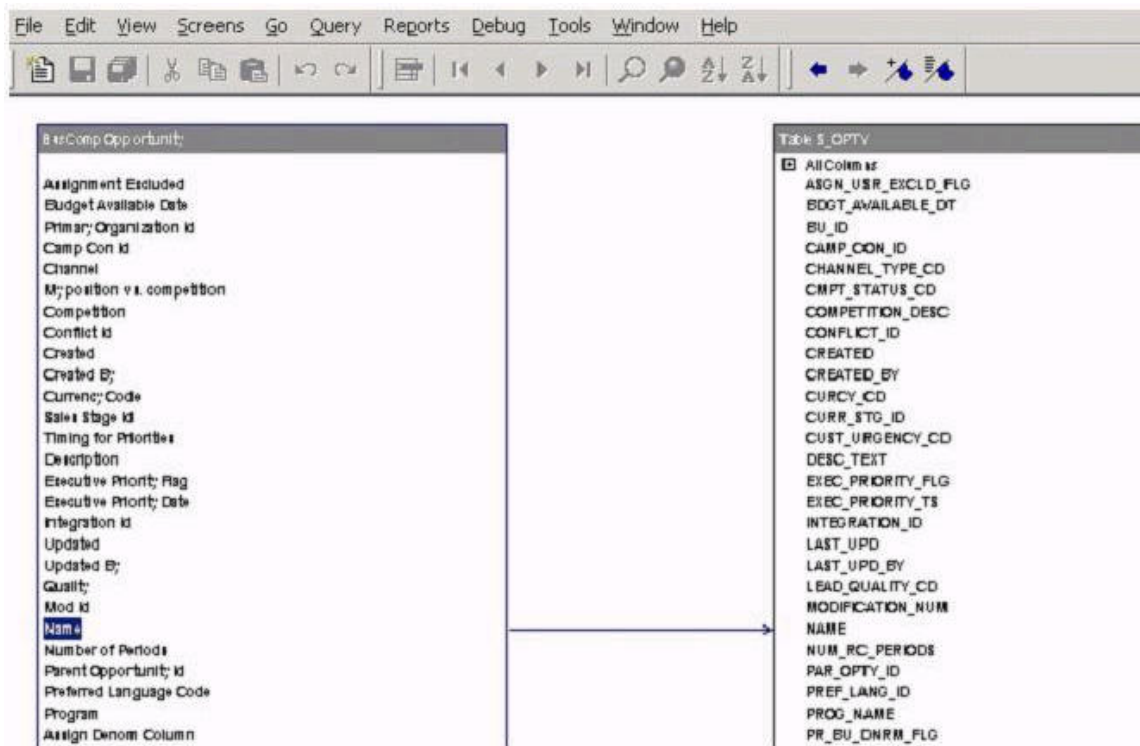
In which of the following DAC views would you specify the database owner and database user properties to an OLTP database?

- A. Design
- B. Monitor
- C. Execute
- D. Setup

Answer: D

Question: 8

Exhibit:



Exam Name:	Siebel 7.7 Analytics Data Warehouse Developer Professional Core Exam		
Exam Type	Oracle		
Exam Code:	1Z0-640	Total Questions:	99

Which of the following are true of the Exhibit? Choose two.

- A. It is one of the views of the Siebel Call Center application
- B. It is used to find out which column of the warehouse table S_OPTY contains the fields of the Opportunity business component
- C. It is accessed through View > Visualize > View Details in Siebel Tools
- D. Name is the name of the field; NAME is the name of the column

Answer: C, D

Question: 9

Which are true of the DAC objects? Choose three.

- A. Table objects are the logical tables defined in the database schema
- B. A subject area is the logical grouping of the table groups related to a particular subject or application context
- C. A dependency rule determines the order in which tasks are executed
- D. Jobs are unique steps executed during the ETL and are related to data transformation or database objects
- E. The DAC objects can be found in the Design View's top-pane tabs

Answer: B, C, E

Question: 10

Which statements about change capture views are TRUE? Choose two.

- A. They do not exist in the Siebel transactional database.
- B. They are dropped and created automatically when DAC performs a full or incremental load of the data warehouse.
- C. They are used to extract the relevant data from the Siebel transactional database.
- D. They cannot be generated manually.

Answer: B, C

Question: 11

Which are true of the ? Choose two.

- A. It is the DAC Server Monitor Icon
- B. It shows that the DAC Server is disconnected
- C. It shows that Informatica Server is running
- D. It shows that the DAC Client is running an ETL process
- E. It shows that the DAC Client is connected to the DAC Server but the server is idle

Answer: A, E

Question: 12

Exhibit:

Exam Name:	Siebel 7.7 Analytics Data Warehouse Developer Professional Core Exam		
Exam Type	Oracle		
Exam Code:	1Z0-640	Total Questions:	99

Delivery	New	Priority Flag	Project #	Name	Account	Status
	*		1-E9KX	Incentive Compens	Marriott International	Active
	*		1-ETY2	Sales Deployment 1	Lexis-Nexis	Active
	*		1-1TQGS	Employee Relations	Siebel Systems	Active
	*		1-1Y9XT	Industry Application		Active
	*		1-10QZT	Siebel 7	Siebel Systems, Inc.	Inactive
			1-240HX	Field Service Implem	3Com Distribution	Not Yet Active

How would you find the table column that maps to the Status field of the Project list applet shown here? Choose two.

- A. Right-click the Status column heading to see the table column in the Siebel application
- B. In the Siebel application, select Help > About View from the application-level menu to find out which business component this applet is based on
- C. In Siebel Tools, select the Project business component > Field, then find the column property of the Status field
- D. In Siebel Tools, select the Project table and then find the column property of the Status field

Answer: B, C

Question: 13

Which of the following is NOT a way to start the DAC server?

- A. By setting up the command line access to the DAC server
- B. By double-clicking the DAC Server icon on your desktop to run the startserver.bat file
- C. By setting up the DAC server as a scheduled task
- D. By double-clicking the DAC Client icon on your desktop to run the startclient.bat file

Answer: D

Question: 14

Which of the following is one of the leading practices recommended by Siebel Systems when customizing Siebel Relationship Management Warehouse?

- A. Use custom mapping templates and modify them rather than creating them from scratch
- B. Do not edit source tables in Informatics Designer if source tables are extended after being copied into the Custom folder
- C. Run ETL process separately with the Siebel OLTP and external data sources
- D. Refrain from using Custom Mapping Templates but use those in the SDE and SIL folders

Exam Name:	Siebel 7.7 Analytics Data Warehouse Developer Professional Core Exam		
Exam Type	Oracle		
Exam Code:	1Z0-640	Total Questions:	99

Answer: A

Question: 15

Name the method that starts an execution plan.

- A. StopETL
- B. ETLStatus
- C. StartETL
- D. InformaticaStatus

Answer: C

Question: 16

Which does NOT affect the ETL query performance?

- A. Informatica Server throughput
- B. Siebel OLTP schema
- C. Database server throughput
- D. Data volume

Answer: B

Question: 17

How would you solve the deadlocked repository?

- A. Restart the execution plan
- B. Check the log and fix the problem
- C. Use Informatica Repository Manager to release all locks
- D. Use DAC client to release all locks on Informatica repository

Answer: C

Question: 18

Using the exhibit:

Exam Name:	Siebel 7.7 Analytics Data Warehouse Developer Professional Core Exam		
Exam Type	Oracle		
Exam Code:	1Z0-640	Total Questions:	99

```

UNTITLED.TXT - Notepad
File Edit Format View Help
DELETE FROM S_ETL_D_IMG_87
WHERE EXISTS
  (SELECT 'X'
   FROM S_ETL_I_IMG_87
   WHERE S_ETL_D_IMG_87.ROW_ID = S_ETL_I_IMG_87.ROW_ID
   AND S_ETL_I_IMG_87.OPERATION = 'd'
  );

DELETE FROM S_ETL_I_IMG_87
WHERE LAST_UPD < 2004-01-30 10:24:32.111';

DELETE FROM S_ETL_I_IMG_87
WHERE LAST_UPD > 2005-09-21 11:24:32.111';

DELETE FROM S_ETL_I_IMG_87
WHERE EXISTS
  (
  SELECT 'X'
  FROM S_ETL_I_IMG_87
  WHERE S_ETL_R_IMG_87.ROW_ID = S_ERL_I_IMG_87.ROW_ID
  );
INSERT INTO S_ETL_IMG_87 (ROW_ID, MODIFICATION_NUM, LAST_UPD)
  SELECT ROW_ID, MODIFICATION_NUM, LAST_UPD
  FROM S_ETL_I_IMG_87;

DELETE FROM S_ETL_R_IMG_87 WHERE LAST_UPD < '2004-01-30 10:24:32.111';|

```

Identify the Delete Image table?

- A. S_ETL_R_IMG_87
- B. S_ETL_D_IMG_87
- C. S_REGION
- D. S_ETL_I_IMG_87

Answer: B

Question: 19

Which are true of Exception reports? Choose three.

- A. They are to be run prior to both full or refresh load
- B. Exception reports check the data integrity of the Siebel Relationship Management Warehouse database
- C. You can run them from the Data Warehouse Application Console client
- D. The ETL process might fail if the exceptions are not corrected

Answer: A, C, D

Question: 20

When are change capture tables created?

- A. They are created when the DAC is pruned.
- B. They are created during the full and incremental loads to the data warehouse.
- C. They are created using a SQL script.
- D. They are created when SIF (Siebel Archive Files) are applied to the Siebel transactional database during installation.

Exam Name:	Siebel 7.7 Analytics Data Warehouse Developer Professional Core Exam		
Exam Type	Oracle		
Exam Code:	1Z0-640	Total Questions:	99

Answer: D

Question: 21

Which of the following are some of the goals of data warehousing? Choose two.

- A. Integrate data from multiple sources
- B. Create more joins to save database space
- C. Simplify keys
- D. Normalize data

Answer: A, C

Question: 22

In which of the following applications do you run Exception Reports?

- A. Informatica Monitor
- B. DAC client
- C. DAC server
- D. Siebel Tools
- E. Analytics Administration Tool

Answer: B

Question: 23

Which of the following is true of the ETL process?

- A. SDE routines are used to extract data from the SRMW tables
- B. SDE routines are only for full extraction
- C. Staging tables have to be persistent until the next ETL processes
- D. SIL processes load data from the staging tables into the dimension and fact tables

Answer: D

Question: 24

Which Siebel Relationship Management Warehouse table stores default values used in ETL?

- A. W_ETL_RUN_S
- B. W_PARAM_G
- C. W_ETL_DATASRC_S
- D. S_ETL_DATASRC

Answer: B

Question: 25

Choose three.

- A. Analytics Web
- B. Web Catalog
- C. Informatica Server
- D. Siebel Repository
- E. DAC Server
- F. Analytics Repository

Answer: A, B, F

Exam Name:	Siebel 7.7 Analytics Data Warehouse Developer Professional Core Exam		
Exam Type	Oracle		
Exam Code:	1Z0-640	Total Questions:	99

Question: 26

Which Siebel Relationship Management Warehouse component stores the data that the Siebel Analytics client accesses?

- A. Informatica Workflow Manager
- B. Informatica Repository Manager
- C. Administrator Workstation
- D. SRMW Database
- E. SRMW Server
- F. Repository Database

Answer: D

Question: 27

Which is NOT true of the Siebel Analytics Standalone application?

- A. Provides a platform to model data in a form that users can easily understand
- B. Provides a server to generate SQL and seamless access to data from various sources
- C. Fully provides role-based dashboards to support the various roles in a company
- D. Provides an easy-to-use, highly interactive Web-based analysis tool to generate dynamic reports

Answer: C

Question: 28

A business goal of your organization is to report revenue in a real-time manner. How should you configure the ETL to perform this function?

- A. Run an incremental ETL load run at regular intervals to refresh the entire SRMW.
- B. Populate all of the SRMW tables at a very high frequency (once every couple of hours) to ensure that the most up-to-date information is available.
- C. Run an incremental ETL load at regular intervals, but stop the load after the Revenue tables are populated.
- D. Populate a selected set of SRMW tables independent of the regularly scheduled incremental ETL load.

Answer: D

Question: 29

In order to export all information contained in the Design view and the database connection information, what export category would you use?

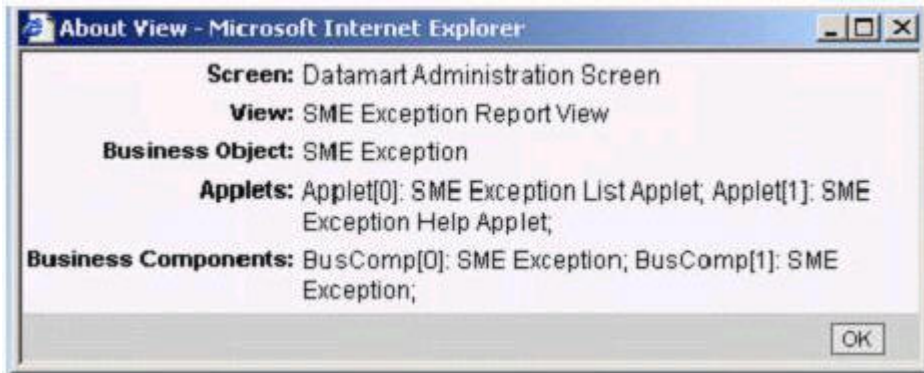
- A. System
- B. Logical
- C. Design
- D. Run Time

Answer: B

Question: 30

Exhibit:

Exam Name:	Siebel 7.7 Analytics Data Warehouse Developer Professional Core Exam		
Exam Type	Oracle		
Exam Code:	1Z0-640	Total Questions:	99



Which of the following are true of the Exhibit? Choose two.

- A. This screen is made of two views
- B. The view maps to two business objects
- C. There are two list applets in this view
- D. The business component for this view is SME Exception
- E. You can get to this by selecting Help > About View in the application level menu

Answer: D, E

Question: 31

You have imported WC_PROD_D source table in Informatica Designer and opened it in a Source Analyzer. How do you examine the table definition? Choose three.

- A. Double-click WC_PROD_D
- B. Right-click WC_PERSON_D and select Preview Data
- C. Right-click WC_PERSON_D and select Edit
- D. Select Sources > Edit from the Designer menu bar
- E. Select Edit > Tables from the Designer menu bar

Answer: A, C, D

Question: 32

Which of the following DAC tasks can be used to populate the W_PARTY_LOGIN table?

- A. Aggregate
- B. Hierarchy
- C. Visibility
- D. Security

Answer: C

Question: 33

ABC has several in-house Siebel Analytics consultants specializing in various roles. Which of the following duties would least likely be performed by a data warehouse developer?

- A. Create logical models of the Data Warehouse database
- B. Generate physical models of the Data Warehouse database with the support of a database administrator
- C. Create reports and customize the Analytics UI
- D. Manage and maintain metadata repository

Exam Name:	Siebel 7.7 Analytics Data Warehouse Developer Professional Core Exam		
Exam Type	Oracle		
Exam Code:	1Z0-640	Total Questions:	99

E. Create mappings and run ETL processes

Answer: C

Question: 34

Which of the following Informatica Designer tools would you use to import, create, and maintain target definitions?

- A. Warehouse Designer
- B. Mapping Designer
- C. Source Analyzer
- D. Transformation Developer
- E. Mapplet Designer

Answer: A

Question: 35

The standard (out of the box) ETL process populates the day dimension in what manner?

- A. After the day has passed so that all information about the date can be processed at once
- B. On the day when the date occurs
- C. In advance with 30 years worth of data about the date
- D. One week after the day has passed

Answer: C

Question: 36

Which are the DAC views? Choose three.

- A. Design
- B. Execution Plans
- C. Schedule
- D. Setup
- E. Execute
- F. Run

Answer: A, D, E

Question: 37

Which of the following are recommended ETL configuration practices? Choose three.

- A. Always run complete ETL process
- B. Test the modified ETL by running an execution plan
- C. Create a backup of the DAC repository
- D. Document all changes made to the repository

Answer: B, C, D

Question: 38

SIL mappings contain additional components to those in an SDE mapping. Which are additional components used only in an SIL mapping? (Choose two)

- A. Filter transformation
- B. Update strategy transformation
- C. Expression transformation

Exam Name:	Siebel 7.7 Analytics Data Warehouse Developer Professional Core Exam		
Exam Type	Oracle		
Exam Code:	1Z0-640	Total Questions:	99

D. Target definition

Answer: A, B

Question: 39

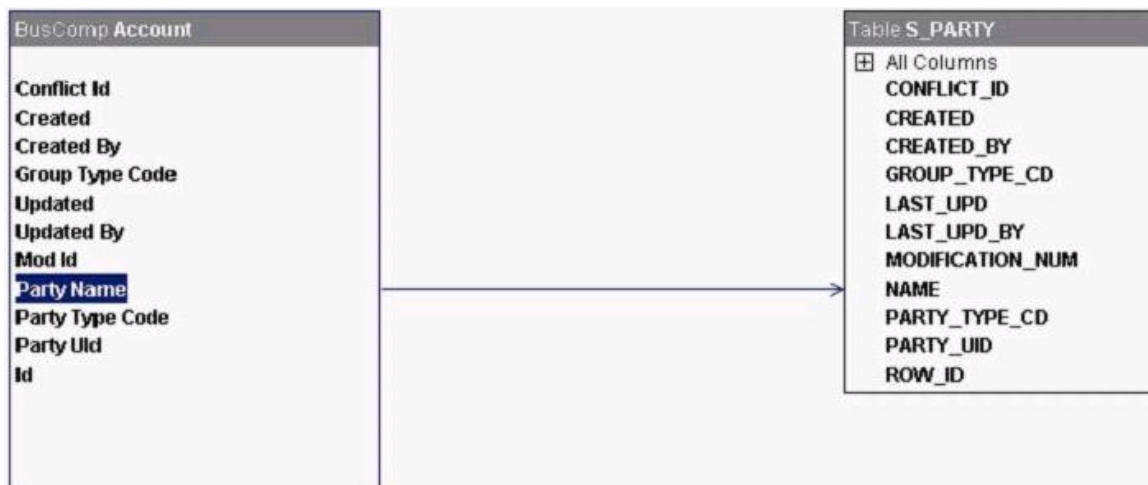
Duties such as setting up database connections and designing data warehouse applications are typically performed by which of the following Siebel Analytics consultants?

- A. Server architect
- B. Data warehouse developer
- C. Application developer
- D. Siebel Tools configuration specialist

Answer: B

Question: 40

Exhibit:



Which of the following are true of the Exhibit? Choose two.

- A. It is used to find out the relationship between the business component, its field and the corresponding table and its columns
- B. It is the MVG applet of the Account List applet
- C. The Party name field of the Account business component maps to the ID column of the S_PARTY table
- D. The Id field of the Account business component maps to the ROW_ID column of the S_PARTY table

Answer: A, D

Question: 41

In which internal table is the datasource identifier stored?

- A. W_DATASRC_NUM_G
- B. W_PARAM_G
- C. W_ETL_RUN_S
- D. W_LST_OF_VAL_G

Exam Name:	Siebel 7.7 Analytics Data Warehouse Developer Professional Core Exam		
Exam Type	Oracle		
Exam Code:	1Z0-640	Total Questions:	99

E. S_ETL_RUN

Answer: B

Question: 42

Which server provides the functionality of balancing loads across registered Informatica Servers?

- A. DAC Server
- B. Resonate
- C. Siebel Server
- D. Informatica Repository Server
- E. Siebel Analytics Server

Answer: A

Question: 43

Which of the following are true of the Type R Change Capture tables? Choose two

- A. Type R Change Capture for S_ORG_EXT is S_ETL_D_IMG_26
- B. They maintain a record of all data extracted to the warehouse
- C. They store extracted data before loaded into target tables
- D. They store denormalized hierarchical relationships
- E. They store information about changes to data in transactional system

Answer: B, E

Question: 44

Exhibit:

The exhibit displays five steps in a vertical list, each in a blue box:

- A. Create sessions and workflows
- B. Load SCD
- C. Configure DAC
- D. Create SCD table
- E. Create mapping to handle SCD

What is the correct order of the steps in the exhibit required to build Slowly Changing Dimensions?

- A. D, E, A, C, B
- B. A, E, D, C, B
- C. E, D, C, A, B
- D. E, D, A, C, B

Exam Name:	Siebel 7.7 Analytics Data Warehouse Developer Professional Core Exam		
Exam Type	Oracle		
Exam Code:	1Z0-640	Total Questions:	99

Answer: A

Question: 45

Which of the following do NOT have exception reports defined for them? Choose two.

- A. Aggregates
- B. List of Values
- C. Exchange rates
- D. Hierarchies
- E. Dimensions

Answer: A, E

Question: 46

You want to see the sales figure by region by product. Which would be the fact in this dimensional model?

- A. Sales figure
- B. Product
- C. Product and Region
- D. Product, Region, and Time
- E. Sales figure and Product

Answer: A

Question: 47

When do the Siebel Relationship Management Warehouse Hierarchy tables get populated?

- A. During the incremental image capture
- B. During the Extract
- C. During the Transform process
- D. During the Load process
- E. After loading the general, dimension and fact tables

Answer: E

Question: 48

What are the benefits of selectively refreshing the data warehouse?

- A. It leaves a level of data latency between various data warehouse tables
- B. It saves time during the incremental ETL load because the selected tables are already populated
- C. It alleviates the need to run an incremental ETL load
- D. Impact on source systems is minimized

Answer: D

Question: 49

Which Siebel Analytics component is used to launch jobs and make personalized results available to individual users?

- A. Siebel Relationship Management Warehouse
- B. Siebel Delivers
- C. Siebel Analytics Server and Siebel Analytics Web Server

Exam Name:	Siebel 7.7 Analytics Data Warehouse Developer Professional Core Exam		
Exam Type	Oracle		
Exam Code:	1Z0-640	Total Questions:	99

- D. Siebel Intelligence Dashboard
- E. Siebel Answers

Answer: B

Question: 50

Which of the following are some of the reasons why incremental change capture is a better method than a traditional bulk load? Choose two.

- A. Data become more accurate as there are more data-cleansing efforts
- B. Incremental ETL runs are cheaper to run
- C. Change capture can occur while the operating system is still running
- D. There is a need to purge large amount of data from data warehouse

Answer: B, C

Question: 51

Which of the following port types is used in Source objects in a mapping?

- A. Input
- B. Output
- C. Input/Output
- D. Variable

Answer: B

Question: 52

Which of the statements are TRUE of Type I Slowly Changing Dimensions? Choose three.

- A. It updates the attribute.
- B. It does not insert new records.
- C. It contains the start and end dates during which the SCD attribute is in effect.
- D. It overwrites the existing attribute value with new information.
- E. It preserves the history of the changed attribute.

Answer: A, B, D

Question: 53

Which statement is TRUE of deletes?

- A. Deletes are captured using delete triggers in the Siebel transactional database.
- B. The preconfigured Extraction, Transformation, Loading (ETL) process captures deletes for selected target tables in the Siebel transactional database.
- C. Deleted records are applied to the source tables in the SRMW.
- D. Records are physically deleted from the SRMW.

Answer: A

Question: 54

Which of the following are true of the Selective Refresh ETL? Choose two.

- A. It refreshes different star schemas at different intervals
- B. It does not reduce ETL execution time
- C. There is a level of data latency between tables
- D. It loads the entire set of star schemas

Exam Name:	Siebel 7.7 Analytics Data Warehouse Developer Professional Core Exam		
Exam Type	Oracle		
Exam Code:	1Z0-640	Total Questions:	99

Answer: A, C

Question: 55

A data warehouse developer added a column storing the preferred restaurant for a contact to the S_CONTACT table. And the W_CONTACT_D was modified to accommodate the new preferred restaurant column. Which type of customization was used?

- A. Type I
- B. Type II
- C. Type III
- D. Type IV

Answer: A

Question: 56

Select the correct pair to complete this sentence: Staging tables are populated via ____ and the image tables are populated during _____.

- A. Hierarchy building; Transformation
- B. Extract; Hierarchy building
- C. Extract; Change Capture process
- D. Extract; Load
- E. Load; Full Image Capture
- F. Transform; Load

Answer: C

Question: 57

Which of the following could be used to optimize ETL session performance? Choose two.

- A. Drop indexes prior to loading, and then recreate indexes afterwards
- B. Partition large fact tables
- C. Build mappings to maximize connection time to the OLTP
- D. Use constraint-based loading whenever possible

Answer: A, B

Question: 58

Which Siebel Relationship Management Warehouse component accesses and processes the workflows in the Informatica repository?

- A. Data Warehouse Application Console (DAC) Client
- B. Informatica Repository
- C. Informatica Server
- D. DAC Repository

Answer: C

Question: 59

Which of the items listed can function as change capture elements? Choose two.

- A. Mappings
- B. Repositories
- C. Tables

Exam Name:	Siebel 7.7 Analytics Data Warehouse Developer Professional Core Exam		
Exam Type	Oracle		
Exam Code:	1Z0-640	Total Questions:	99

D. Views

Answer: C, D

Question: 60

You need to add a new dimension table to a new fact table in the Siebel Relationship Management Warehouse database. Which of the following are the required columns in both the fact and dimension tables?

- A. ROW_WID, PROC_WID, INTEGRATION_ID, DATASOURCE_NUM_ID
- B. INTEGRATION_ID, DATASOURCE_NUM_ID
- C. ETL_PROC_WID, INTEGRATION_ID, DATASOURCE_NUM_ID
- D. ROW_WID, ETL_PROC_WID, INTEGRATION_ID, DATASOURCE_NUM_ID

Answer: D

Question: 61

Which of the following is used to process ETL workflows once the DAC initiates ETL tasks?

- A. DAC Server
- B. Informatica Server
- C. Informatica Repository Server
- D. Siebel Analytics Server
- E. Informatica Repository Manager

Answer: B

Question: 62

Which of the following can you use to access the DAC Server to start and stop execution plans? Choose two.

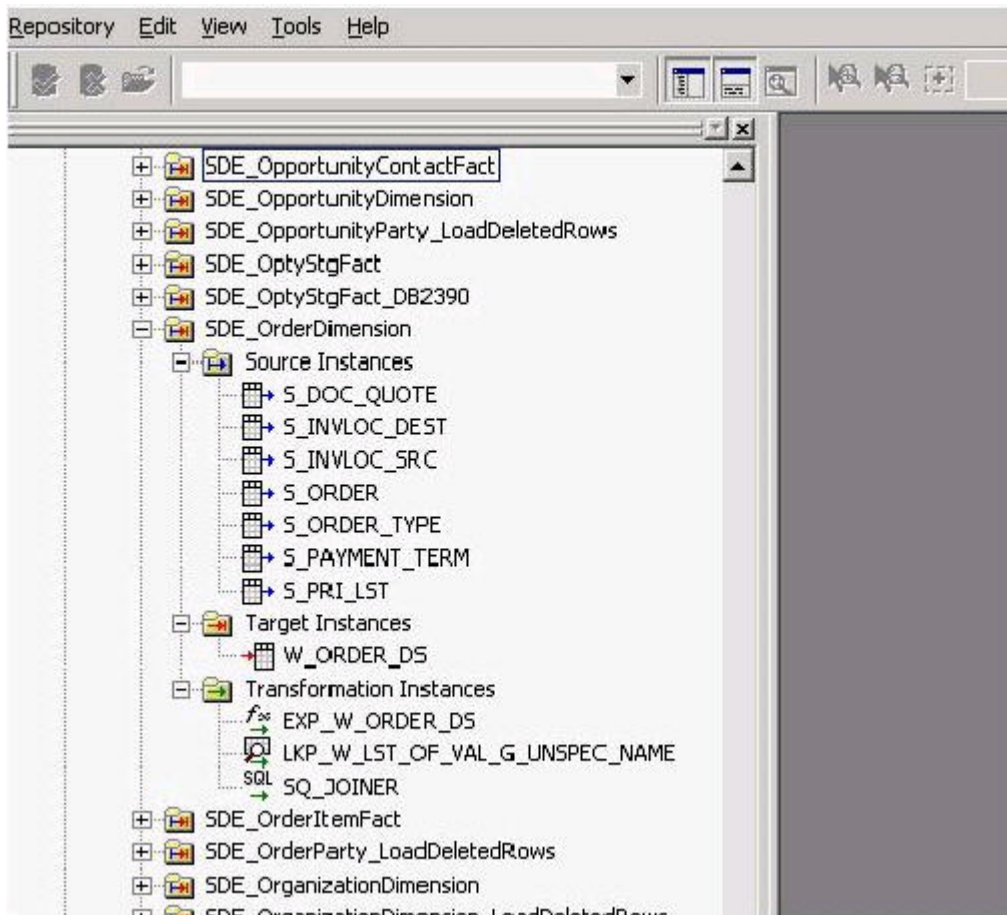
- A. Third-party administration and management tools
- B. XML files
- C. DAC Client
- D. Command-line access

Answer: C, D

Question: 63

Exhibit:

Exam Name:	Siebel 7.7 Analytics Data Warehouse Developer Professional Core Exam		
Exam Type	Oracle		
Exam Code:	1Z0-640	Total Questions:	99



Which of the following are true of the transformations used in the SDE_OrderDimension mapping? Choose three.

- A. Transformation that performs simple calculations
- B. Transformation that performs aggregate calculations
- C. A conditional filter
- D. Transformation that allows inserts, updates, deletes, and rejects
- E. Transformation that looks up values and passes to other objects
- F. Transformation that allows joins between tables in different data sources

Answer: A, E, F

Question: 64

Exhibit:

Exam Name:	Siebel 7.7 Analytics Data Warehouse Developer Professional Core Exam		
Exam Type	Oracle		
Exam Code:	1Z0-640	Total Questions:	99

Name*	Type*	Main Table*	Inactive
OPPORTUNITY COMPETITOR FACT GROUP	Star	W_OPTY_CMPT_F	<input type="checkbox"/>
OPPORTUNITY CONTACT FACT GROUP	Star	W_OPTY_CON_F	<input type="checkbox"/>
OPPORTUNITY DIMENSION GROUP	Dimension	W_OPTY_D	<input type="checkbox"/>
OPPORTUNITY STAGE FACT GROUP	Star	W_OPTY_STG_F	<input type="checkbox"/>

Name	Main Table for Group	Relationship Type	Inactive
W_COMPETITOR_D		Dimension	<input type="checkbox"/>
W_OPTY_D	OPPORTUNITY DIMENSION GROUP	Dimension	<input type="checkbox"/>
W_LOV_D		Dimension	<input type="checkbox"/>
W_DAY_D	DAY DIMENSION GROUP	Dimension	<input type="checkbox"/>
W_OPTY_CMPT_F	OPPORTUNITY COMPETITOR FACT GR...	Self	<input type="checkbox"/>

Which are true of the research results? Choose two.

- A. The W_OPTY_D is the main table of the Opportunity Dimension Table Group
- B. The Opportunity Dimension Group is the only table group to which W_OPTY_D belongs
- C. This is a part of the DAC client Setup view
- D. The Opportunity Competitor Fact Group represents a star schema

Answer: A, D

Question: 65

Which indexes are used to improve the performance of the ETL process?

- A. Query indexes
- B. ETL indexes
- C. Script indexes
- D. DAC indexes

Answer: B

Question: 66

Which of the following are true of the Siebel Relationship Management Warehouse extension tables? Choose three.

- A. They are not maintained in Siebel Tools
- B. There is a one-to-one relationship between SRMW extension columns and the corresponding OLTP extension columns
- C. They have a one-to-one relationship with their corresponding dimension and fact tables
- D. For every extension table, there is an extension staging table

Exam Name:	Siebel 7.7 Analytics Data Warehouse Developer Professional Core Exam		
Exam Type	Oracle		
Exam Code:	1Z0-640	Total Questions:	99

- E. The standard mappings are used to populate any extension columns created
- F. ROW_WID is not needed on extension tables

Answer: A, C, D

Question: 67

Which of the following Siebel Analytics components would you configure to automatically send an email to yourself when a service request is assigned to you?

- A. Siebel Delivers
- B. Siebel Answers
- C. Siebel Relationship Management Warehouse
- D. Disconnected Analytics
- E. Data Application Console (DAC)

Answer: A

Question: 68

In which transformation object do you need to set a Lookup table name?

- A. Lookup Procedure
- B. Expression
- C. Update Strategy
- D. Filter

Answer: A

Question: 69

After installing Informatica Client, Server, and DAC, why did you import a SIF file from the Siebel Tools\Objects folder in Siebel Tools?

- A. To create the OPB tables
- B. To create the Siebel OLTP seed data
- C. To create additional S_ETL_* tables that are necessary to run the ETL
- D. To create the warehouse tables

Answer: C

Question: 70

You would like to add a column for an existing dimension table to a non-Siebel database data. What type of customization will you use?

- A. Type I
- B. Type II
- C. Type III
- D. Type IV

Answer: C

Question: 71

Which Siebel Analytics component uses metadata to direct processing and connects natively or via ODBC to the database?

- A. Siebel Analytics Web Server
- B. Siebel Analytics Server

Exam Name:	Siebel 7.7 Analytics Data Warehouse Developer Professional Core Exam		
Exam Type	Oracle		
Exam Code:	1Z0-640	Total Questions:	99

- C. Siebel Analytics Scheduler
- D. Siebel Analytics Web Catalog
- E. Data Sources

Answer: B

Question: 72

How many image tables are created for each source table in the Siebel transactional database?

- A. Five
- B. Three
- C. Two
- D. Four

Answer: B

Question: 73

Which components are part of the Siebel Analytics (standalone) platform? Choose four.

- A. Web Catalog
- B. Analytics Web
- C. Analytics Repository
- D. Informatica Repository
- E. DAC Repository
- F. Siebel Analytics Server

Answer: A, B, C, F

Question: 74

Which statements are TRUE of the auxiliary change capture process? Choose two.

- A. It considers primary table rows changed even if the record has not been updated in the primary table.
- B. It does not consider primary table rows changed if the record has not been updated in the primary table.
- C. Change capture occurs in primary, auxiliary, and source tables.
- D. The process forces the primary (header/master) table data to be extracted when data in auxiliary (child) table changes.

Answer: A, D

Question: 75

Which of the following tables contains ROW_IDs of the records that have been identified as new or modified?

- A. S_ETL_I_IMG_45
- B. S_ETL_LOV
- C. S_ETL_PARAM
- D. S_ETL_RUN
- E. S_ETL_SRC_TABLE

Answer: A

Question: 76

Refer to the Exhibit.

Exam Name:	Siebel 7.7 Analytics Data Warehouse Developer Professional Core Exam		
Exam Type	Oracle		
Exam Code:	1Z0-640	Total Questions:	99

- A. Create execution plan
- B. Identify table groups
- C. Analyze the subject area
- D. Run execution plan
- E. Create subject area

Order the steps required to selectively refresh the SRMW.

- A. B, E, C, A, D
- B. A, C, B, E, D
- C. E, A, B, C, D
- D. C, B, E, A, D

Answer: D

Question: 77

In which of the DAC views would you define scheduling parameters to execute ETL plans?

- A. Design
- B. Monitor
- C. Execute
- D. Setup

Answer: C

Question: 78

Which of the following columns is assigned the next sequential number and is used as a unique identifier for the warehouse?

- A. INTEGRATION_ID
- B. ROW_WID
- C. DATASOURCE_NUM_ID
- D. ETL_PROC_WID

Answer: B

Question: 79

Which of the following are true of the Siebel Relationship Management Warehouse (SRMW)? Choose two.

- A. It includes a prebuilt database in a star schema format
- B. It can only be used with Siebel transactional database
- C. When using Siebel Analytics Server, third-party analytical tools cannot be used in conjunction with the SRMW

Exam Name:	Siebel 7.7 Analytics Data Warehouse Developer Professional Core Exam		
Exam Type	Oracle		
Exam Code:	1Z0-640	Total Questions:	99

D. It includes a set of tools that take the Siebel transactional data and other data and load them into the SRMW tables

Answer: A, D

Question: 80

Which is NOT true of Workflow session log files?

- A. Generated for each session
- B. Saved in the Informatica Client directory
- C. Include allocation of system-shared memory
- D. Default name is session_name.log

Answer: B

Question: 81

ETL Parameters are configured using which of the following? Choose two.

- A. JavaScript
- B. Informatica Parameter Files
- C. DAC Client
- D. DAC Command Line

Answer: B, C

Question: 82

Your initial ETL process failed. Which of the following logs would you check to fix the problems? Choose two.

- A. Informatica Client session log
- B. Informatica Server session log
- C. DAC Server log
- D. NQServer log

Answer: B, C

Question: 83

Which of the following ensures a single enterprise view across the Siebel Relationship Management Warehouse and also enables a cross-fact analysis?

- A. Change capture tables
- B. Star schema
- C. Conforming dimensions
- D. Snowflake schema
- E. Prune days ETL preference

Answer: C

Question: 84

Which of the following are true of the Data Application Console (DAC)? Choose three.

- A. It helps minimize installation, setup, and configuration time
- B. It facilitates quick data warehouse application development
- C. It is optimized for small data warehouses with little to no customization
- D. It helps minimize ETL execution time

Exam Name:	Siebel 7.7 Analytics Data Warehouse Developer Professional Core Exam		
Exam Type	Oracle		
Exam Code:	1Z0-640	Total Questions:	99

E. It comes standard with any Siebel Analytics purchase

Answer: A, B, D

Question: 85

Which of the following has the appropriate permissions for the Siebel transaction database and the SRMW database if the Siebel transaction database is on MS SQL Server platform?

- A. SSE_ROLE
- B. Hostname
- C. NT Login ID
- D. SADMIN

Answer: A

Question: 86

Which of the following are true of the DAC objects? Choose two.

- A. A table group is a logical grouping of tables that defines a logical relationship between its component tables
- B. The DAC repository objects have a hierarchical relationship to each other
- C. Subject areas in the DAC always coincide with the Answers subject areas
- D. The tables cannot be transactional tables

Answer: A, B

Question: 87

Which of the following would you use to reduce ETL processing to improve performance? Choose two.

- A. Identify DAC objects associated with required tables and prune those that are not related to the star schemas used in your business
- B. Use complete ETL
- C. Always use Selective Refresh ETL
- D. Delete unnecessary table groups in subject areas in DAC
- E. Create indexes on relevant image tables

Answer: A, E

Question: 88

Which of the following are true of the Data Warehouse Application Console (DAC)? Choose three.

- A. It provides access to the entire SRMW application to configure and execute ETL
- B. It is a third-party tool of the SRMW components
- C. It is a command-line utility to run ETL or Exception Reports
- D. You can register Informatica Servers and source and target databases
- E. You can restart the ETL from the point of failure

Answer: A, D, E

Question: 89

What is the suggested first step to create an SDE mapping?

- A. Create an expression transformation and target definition.

Exam Name:	Siebel 7.7 Analytics Data Warehouse Developer Professional Core Exam		
Exam Type	Oracle		
Exam Code:	1Z0-640	Total Questions:	99

- B. Create a Source Qualifier.
- C. Create a source definition.
- D. Leverage an existing mapping by copying it to the custom folder for reuse.

Answer: D

Question: 90

Which tool would you use to execute mappings? Choose two.

- A. Informatica Workflow Manager
- B. Informatica Repository Manager
- C. DAC Client
- D. Informatica Repository Server

Answer: A, C

Question: 91

Which of the following is used by mappings to move data from sources to targets?

- A. Workflow monitor
- B. Session
- C. Port
- D. Mapplet

Answer: B

Question: 92

Which relationship management warehouse table sums service request data by measures including Minutes Open, Total SRs, Open SRs, Closed SRs, Pending SRs by Severity, Status, Product and Owner?

- A. W_SRVREQ_A
- B. W_SRVREQ_D
- C. W_SRVREQ_DX
- D. W_SRVREQ_FS
- E. W_SRVREQ_MD

Answer: A

Question: 93

What type of index has reduced storage requirements when compared to that of other indexing techniques?

- A. B-Tree index
- B. JPEG index
- C. Bitmap index
- D. Clustered index

Answer: C

Question: 94

Which of the following transformation types is used to perform simple calculations on a row-by-row basis?

- A. Aggregator transformation

Exam Name:	Siebel 7.7 Analytics Data Warehouse Developer Professional Core Exam		
Exam Type	Oracle		
Exam Code:	1Z0-640	Total Questions:	99

- B. Filter transformation
- C. Normalizer transformation
- D. Expression transformation

Answer: D

Question: 95

Which is true of the WC_PERSON_DSX?

- A. It is a standard extension table where data is initially loaded in SRMW after running the SDE session
- B. It is a custom extension table where data is loaded in SRMW after running the SIL session
- C. It is a custom extension table where data is initially loaded in SRMW after running the SDE session
- D. It is a custom staging extension table

Answer: D

Question: 96

Exhibit:

Key	ID	Name	Data Type	Size(...)	Nulls	Default
		LAST_UPD	datetime	8	<input type="checkbox"/>	
		MODIFICATION...	numeric	9(10,0)	<input type="checkbox"/>	
		ROW_ID	varchar	15	<input type="checkbox"/>	

Which table's properties are depicted here?

- A. Type R Change Capture table
- B. Type I Change Capture table
- C. Internal table
- D. Hierarchy table

Answer: A

Question: 97

Which of the following DAC objects is used to define whether a task has prerequisite tasks that need to be executed prior to its own execution?

- A. Execution plan
- B. Subject Area
- C. Table Group
- D. Dependency

Answer: D

Question: 98

Exam Name:	Siebel 7.7 Analytics Data Warehouse Developer Professional Core Exam		
Exam Type	Oracle		
Exam Code:	1Z0-640	Total Questions:	99

In order to export all information contained in the Execute view, what export category would you use?

- A. Execute
- B. Logical
- C. Run Time
- D. System

Answer: C

Question: 99

In your implementation, the standard extension tables do not meet the requirements and therefore new staging tables need to be created. Which of the following is true of the new extension tables?

- A. They are extended the Siebel Relationship Management Warehouse tables
- B. They have the W_ prefix
- C. The ROW_ID, INTEGRATION_ID, DATASOURCE_NUM_ID columns of the new tables cannot be null
- D. The INTEGRATION_ID and DATASOURCE_NUM_ID columns are required for the staging tables

Answer: D

End of Document