

Exam Name:	Oracle9iAS: Basic Administration		
Exam Type:	Oracle		
Exam Code:	1Z0-301	Total Questions:	157

**Question: 1**

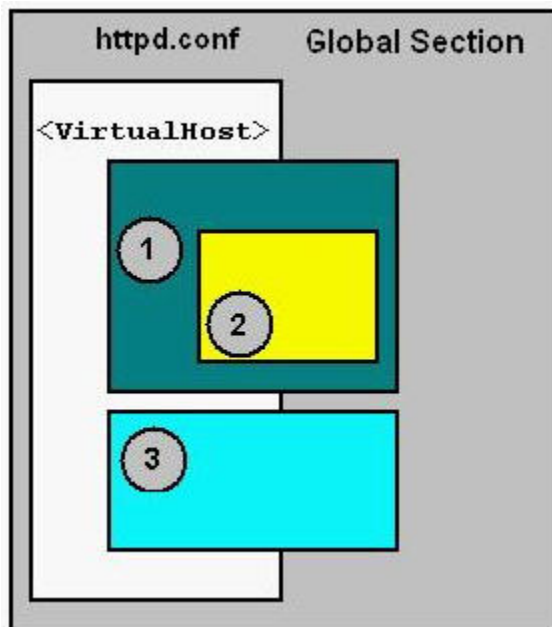
The machine hosting your Oracle9iAS Infrastructure has been stopped and the operating system has been restarted. Which three steps do you need to take to get Oracle Internet Directory working? (Choose three.)

- A. Start Enterprise Manager daemon.
- B. Start the Oracle9iAS metadata repository and the database listener.
- C. Start Oracle Management Server in order to get connected to OEM Web site.
- D. Navigate to the infrastructure homepage, select Oracle Internet Directory, and then click Start.
- E. Navigate to the Farm page, select the Oracle9iAS Infrastructure instance, and click Start All to start Oracle9iAS metadata repository and the database listener and all OID components.
- F. Navigate to the Oracle Internet Directory home page and start the Distributed Administration Service.

**Answer: A, B, D**

**Question: 2**

Examine the configuration context in which Oracle HTTP Server configuration directives can be used.



Not all directives can be used everywhere. The Oracle HTTP Server distinguishes between the configuration contexts on a per-directive basis. (Every directive has a fixed set of contexts in which it is allowed.)

Which three statements are true? (Choose three.)

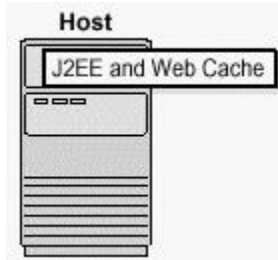
- A. The <Files> or <FilesMatch> container is allowed inside a directory container.
- B. If you want to match URLs you need to use <Location> or <LocationMatch> directives.
- C. The <Location> or <LocationMatch> container is allowed inside a directory container.
- D. Box 1 represents the directory container built by <Directory> or <DirectoryMatch> directives.
- E. The <Files> or <FilesMatch> container is allowed inside a <Location> or <LocationMatch> container.
- F. Box 1 represents a <Location> or <LocationMatch> container with directives that are applied to a particular URL and its subareas.

Exam Name:	Oracle9iAS: Basic Administration		
Exam Type:	Oracle		
Exam Code:	1Z0-301	Total Questions:	157

**Answer: A, B, D**

**Question: 3**

Exhibit:



You have a single installation of J2EE and Web Cache on a single host. Which two Web server types does this topology support? (Choose two)

- A. A Web server that has enabled single sign-on functionality.
- B. A Web server that has a central user management repository.
- C. A Web server that is preconfigured for caching of Web pages.
- D. A Web server that is enabled to connect to an Oracle Directory Server.
- E. A Web server that supports the deployment of J2EE-compliant applications.
- F. A Web server that supports the deployment of Oracle Forms-based applications.

**Answer: C, E**

**Question: 4**

Which two are appropriate directives for the default-web-site.xml file? (Choose two)

- A. `<clister id="-3551400422" />`
- B. `<principals path="./principals.xml"/>`
- C. `<tranaction-config timeout="30000" />`
- D. `<web-app application="default" name="dms" root="/dmsoc4j"/>`
- E. `<web-module id="dms" path=" ../home/applications/dms.war"/>`
- F. `<access-log path=" ../log/home_default_island_1/default-web-access.log"/>`

**Answer: D, F**

**Question: 5**

Which three metrics can you get from the OC4J Instance page on OEM? (Choose three)

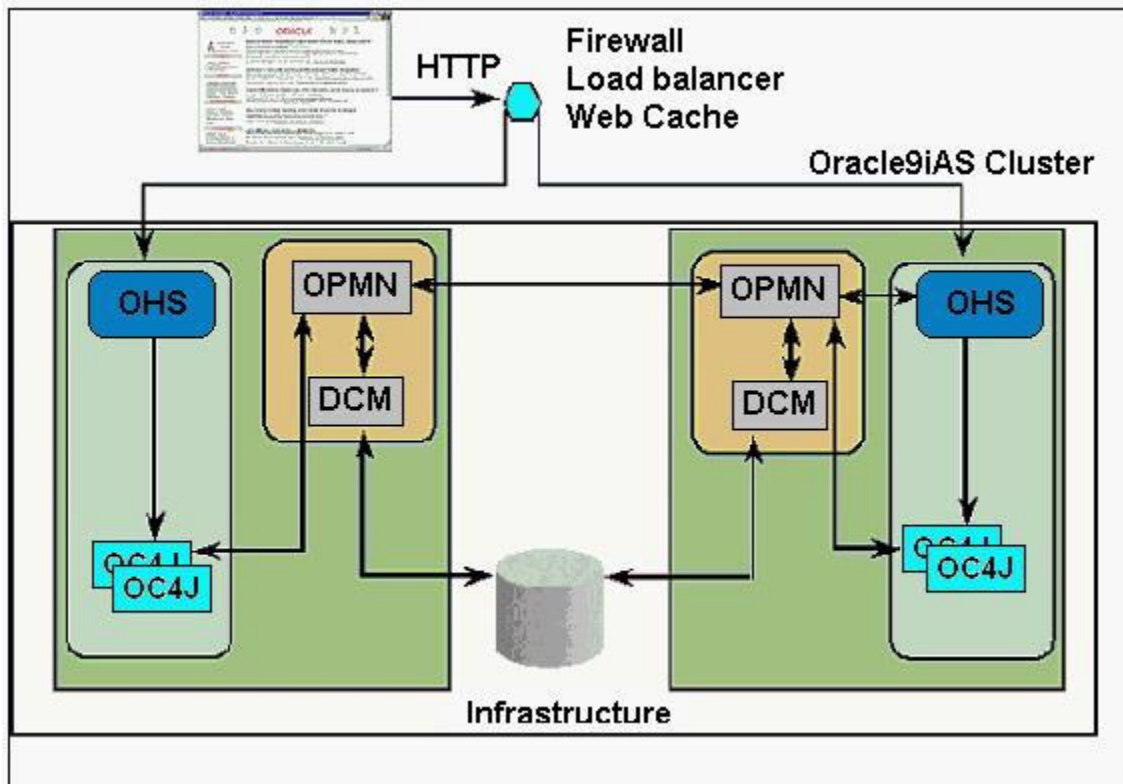
- A. CPU usage
- B. JDBC Connections
- C. Application up time
- D. 9iAS Instance up time
- E. OC4J Instance up time

**Answer: A, B, E**

**Question: 6**

Exhibit:

Exam Name:	Oracle9iAS: Basic Administration		
Exam Type:	Oracle		
Exam Code:	1Z0-301	Total Questions:	157



You are managing an Oracle9iAS Cluster as illustrated in the image. During a period of high volume activity, an OC4J process on one of the nodes goes down. How is this detected, and which two activities takes place at that time? (Choose two.)

- A. The OC4J process death will be detected by the DCM process, and that process will automatically start a replacement OC4J process.
- B. The OC4J process death will be detected by an OHS process, which updates the routing tables. New OC4J requests will be routed to surviving OC4J processes.
- C. The OC4J process death will be detected by the OPMN process, which updates the routing tables. New OC4J requests will be routed to surviving OC4J processes.
- D. The OC4J process death will be detected by the DCM process, which updates the routing tables. New OC4J requests will be routed to surviving OC4J processes.
- E. The OC4J process death will be detected by an OHS process, and that process will automatically start a replacement OC4J process.
- F. The OC4J process death will be detected by the OPMN process, and that process will automatically start a replacement OC4J process.

**Answer: C, F**

**Question: 7**

Exhibit:

```
dcmctl deployApplication -file name -a app_name
[-co comp_name] [-rc root_context]
```

Examine the syntax of the dcmctl deployApplication command. You want to deploy the Web application module packages in simple-web-war to your OC4J instance j2ee1. The Web archive is stored on the application server under the directory /home/user/to\_deploy. The application

<b>Exam Name:</b>	<b>Oracle9iAS: Basic Administration</b>		
<b>Exam Type:</b>	<b>Oracle</b>		
<b>Exam Code:</b>	<b>1Z0-301</b>	<b>Total Questions:</b>	<b>157</b>

should be named simple-web and the application should be accessible as mysimpleweb. Which is the correct approach using dcmctl to deploy your application?

- A. Wrap the Web application into J2EE application (.ear file) before deployment because dcmctl supports only ear files. Enter the following commands on your application server:  

```
$> cd $ORACLE_HOME/dcm/bin
$> dcmctl deploy/Application \
-f /home/users/to_deploy/simple-web.ear \
-a simple-web -co oc4j -rc mysimpleweb
```
- B. Wrap the Web application into a J2EE application (.ear file) before deployment because dcmctl supports only ear files. Enter the following commands on your application server:  

```
$> cd $ORACLE_HOME/dcm/bin
$> dcmctl deployApplication \
-f /home/users/to_deploy/simple-web-ear \
-a mysimpleweb -co j2ee1 -rc simple-web
```
- C. Enter the following commands on your application server:  

```
$> cd $ORACLE_HOME/dcm/bin
$> dcmctl deployApplication \
f /home/users/to_deploy/simple-web.war \
a simple-web
```
- D. Enter the following commands on your application server:  

```
$> cd $ORACLE_HOME/dcm/bin
$> dcmctl deployApplication \
-f /home/users/to_deploy/simple-web.war \
-a simple-web -co j2ee1 -rc mysimpleweb
```
- E. Enter the following commands on your application server:  

```
$> cd $ORACLE_HOME/dcm/bin
$> dcmctl deploy/Application \
-f /home/users/to_deploy/simple-web.war \
-a mysimpleweb -co j2ee1 -rc simple-web
```

**Answer: D**

**Question: 8**

Exhibit:

```
dcmctl deployApplication -file name -a app_name
[-co comp_name] [-rc root_context]
```

Examine the syntax of the dcmctl deployApplication command.

You want to deploy a J2EE application to your default OC4J instance that consists of a Web module named simple-app and that is packaged in the file simple.ear.

The J2EE application should be deployed to your Oracle9iAS Instance named j2ee.1prod1.us.company.com. The J2EE archive is stored on the application server under the directory /home/users/to\_deploy. The application should be administered under the name simple-test. Which is the correct approach using dcmctl to deploy your application?

- A. Enter the following commands on your application server:  

```
$> cd $ORACLE_HOME/dcm/bin
$> dcmctl deployApplication \
-f /home/users/to_deploy/simple.ear \
-a simple-test-co j2ee.1.prod1.us.company.com \
-rc simple-test
```
- B. Enter the following commands on your application server:

<b>Exam Name:</b>	<b>Oracle9iAS: Basic Administration</b>		
<b>Exam Type:</b>	<b>Oracle</b>		
<b>Exam Code:</b>	<b>1Z0-301</b>	<b>Total Questions:</b>	<b>157</b>

- ```

$> cd $ORACLE_HOME/dcm/bin
$> dcmctl deploy/Application \
-f /home/users/to_deploy/simple.ear \
-a simple-test -i j2ee1.prod.us.company.com \
-rf simple-app

```
- C. Enter the following commands on your application server:
- ```

$> cd $ORACLE_HOME/dcm/bin
$> dcmctl deployApplication \
-f /home/users/to_deploy/simple.ear \
-a simple-test -i j2ee1.prod1.use.company.com

```
- D. Enter the following commands on your application server:
- ```

$> cd $ORACLE_HOME/dcm/bin
$> dcmctl deployApplication \
-f /home/users/to_deploy/simple-app.war \
-a simple-test -i j2ee1.prod1.us.company.com

```
- E. Enter the following commands on your application server:
- ```

$> cd $ORACLE_HOME/dcm/bin
$> dcmctl deployApplication \
-f /home/users/to_deploy/simple-app.war \
-a simple-app -i j2ee1.prod1.us.company.com

```

**Answer: C**

**Question: 9**

A user authenticated to a partner application by Oracle9iAS Single Sign-On accesses another partner application in the same session. What does the second application do?

- A. Checks the htaccess file to authenticate the user
- B. Uses the mod\_osso cookie to authenticate the user
- C. Rewrites the URL and stores it in the SSO database
- D. Checks for the correct URL from the Single Sign-On server

**Answer: B**

**Question: 10**

Most J2EE applications use a database to have a persistent storage for data. Servlets, as well as JSPs and EJBs, need to communicate with the database. Which two statements are true? (Choose two)

- A. To be portable across application servers J2EE applications use DataSource objects.
- B. The JDBC DriverManager class has logical names that make applications that use it portable.
- C. JDBC DriverManager class objects enable portable J2EE applications across application servers.
- D. Every JDBC 2.0 driver has its own implementation of DataSource objects that can be bound into an external JNDI namespace.
- E. Every JDBC 2.0 driver has its own implementation of DriverManager class objects that can be bound into an external JNDI namespace.
- F. Using the JDBC DriverManager class is the recommended way for a J2EE application to get a connection.

**Answer: A, D**

**Question: 11**

Which Oracle9iAS capabilities require an Infrastructure? (Choose all that apply.)

<b>Exam Name:</b>	<b>Oracle9iAS: Basic Administration</b>		
<b>Exam Type:</b>	<b>Oracle</b>		
<b>Exam Code:</b>	<b>1Z0-301</b>	<b>Total Questions:</b>	<b>157</b>

- A. Single Sign-On
- B. Application Server Clusters
- C. All Oracle9iAS installation types
- D. Oracle9iAS Web Cache Clusters
- E. Invoking PL/SQL code via Database Access Descriptors

**Answer: A, B**

**Question: 12**

Most J2EE applications, servlets as well as JSPs and EJBs, need to communicate with the database. Which two are true regarding data sources? (Choose two)

- A. J2EE applications use JNDI to look up Data Source objects.
- B. J2EE applications retrieve connections to the database through Data Source objects.
- C. Data Source objects include the mapping between the logical database connection and the physical database information.
- D. J2EE applications retrieve database connections from the application code itself, that includes the physical database information.

**Answer: B, C**

**Question: 13**

When stopping the Infrastructure instance, which option is correct?

- A. Stopping the Infrastructure will stop all of the Oracle9iAS Application Server instances that use it.
- B. You should stop the Infrastructure first, and then stop all of the Oracle9iAS Application Server instances that use it.
- C. You should first stop all of the Oracle9iAS Application Server Instances that use the Infrastructure, then stop the Infrastructure.
- D. Stopping the Infrastructure does not affect the Oracle9iAS Application Server instances that use it.

**Answer: C**

**Question: 14**

Which process of an Oracle9iAS Instance is responsible for managing and tracking the process in the Instance, as well as propagating events among other Instances in the Farm?

- A. DCM
- B. OPMN
- C. OC4J
- D. The OHS Parent process
- E. An OHS Child process

**Answer: B**

**Question: 15**

Which six correctly match the item to its description? (Choose six.)

- A. Dispatcher: Listens for LDAP requests
- B. LDAP server process: Processes LDAP requests
- C. Dispatcher: Sends changes to other OID nodes
- D. Oracle Directory Manager: Displays configuration sets
- E. OID Replication process: Sends changes to other OID nodes

Exam Name:	Oracle9iAS: Basic Administration		
Exam Type:	Oracle		
Exam Code:	1Z0-301	Total Questions:	157

- F. OID Monitor: Initiates and terminates OID server processes
- G. LDAP server process: Initiates and terminates OID server processes
- H. OID Control Utility: Accepts commands to start and stop OID instances

**Answer: A, B, D, E, F, H**

**Question: 16**

Which two OC4J configuration files are server configuration files? (Choose two)

- A. rmi.xml
- B. web.xml
- C. jms.xml
- D. ejb.xml
- E. orion-web.xml

**Answer: A, C**

**Question: 17**

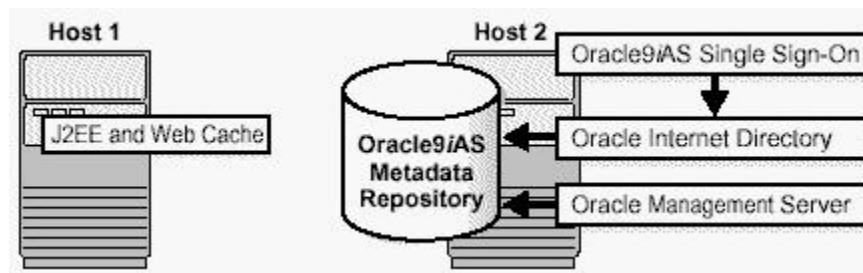
Which statement is true about the Oracle9iAS Single Sign-On session duration?

- A. It is applicable to partner applications only.
- B. It is applicable to external applications only.
- C. It is applicable to all single sign-on sessions.
- D. It is applicable to administrative sessions only.

**Answer: C**

**Question: 18**

Exhibit:



You installed one J2EE and Web Cache instance, which is running. Because your company wants to use the Oracle Internet Directory as a central repository for user information for an application that should be single sign-on enabled you installed Oracle9iAS Infrastructure. Which actions are required in order to use Oracle Internet Directory? (Choose all that apply.)

- A. Ensure that the Oracle9iAS Infrastructure instance is up and running.
- B. Using Oracle Enterprise Manager Website select the J2EE and Web Cache instance and associate the J2EE and Web Cache instance with Oracle9iAS Infrastructure.
- C. Using the Oracle Enterprise Manager Web site, select the Oracle9iAS metadata repository and associate the metadata repository with the J2EE and Web Cache instance.
- D. Stop both instances, J2EE and Web Cache and Oracle9iAS Infrastructure. Then start the J2EE and Web Cache instance before you start the Oracle9iAS Infrastructure instance.
- E. Restart the J2EE and Web Cache instance to have the instance recognized by Oracle9iAS Infrastructure.

<b>Exam Name:</b>	<b>Oracle9iAS: Basic Administration</b>		
<b>Exam Type:</b>	<b>Oracle</b>		
<b>Exam Code:</b>	<b>1Z0-301</b>	<b>Total Questions:</b>	<b>157</b>

F. The only required step is to restart both instances, J2EE and Web Cache and Oracle9iAS Infrastructure. The order is not important.

**Answer: A, B**

**Question: 19**

During the installation process, you can choose to install Oracle9iAS Infrastructure. Which two statements describe the relationship between Oracle9iAS Infrastructure and Oracle9i Application Server? (Choose two.)

- A. Oracle9iAS Infrastructure is a prerequisite for all Oracle9i Application Server installation types.
- B. All Oracle9iAS instances except the installation type Portal and Wireless use Oracle9iAS Infrastructure.
- C. Oracle9i Application Server installation type J2EE and Web Cache does NOT need an Oracle9iAS Infrastructure as a prerequisite.
- D. Oracle9iAS Infrastructure contains Oracle Internet Directory and Oracle Internet Filesystem to centralize user management.
- E. Oracle9i Application Server instances like J2EE and Web Cache need to be single sign-on enabled in order to utilize Oracle9iAS Single Sign-On Server as part of Oracle9iAS Infrastructure.
- F. Oracle9iAS Infrastructure contains a preconfigured database to store all metadata information necessary for Oracle9iAS instances.

**Answer: C, F**

**Question: 20**

Which two are files that Oracle9iAS Web Cache reads at startup? (Choose two.)

- A. httpd.conf
- B. mod\_oc4j.xml
- C. internal.xml
- D. webcache.xml
- E. webcacheroot.orc

**Answer: C, D**

**Question: 21**

Which two statements describe features of the servlet support in Oracle9iAS Containers for J2EE (OC4J)? (Choose two)

- A. Allows use of WAR files to deploy packaged applications.
- B. Requires code changes for distributable web applications.
- C. Retains translated servlet code for extended error reporting.
- D. Provides simple and complex object relational mapping for entity beans.
- E. Replicates state of Web Applications to other servers in the same cluster.

**Answer: A, E**

**Question: 22**

Which mod \_ plsql directive enables you to provide access to a specific PL/SQL procedure without specifying it in the URL?

- A. PlsqlDefaultPage
- B. PlsqlDatabaseName
- C. PlsqlDatabaseUsername



<b>Exam Name:</b>	Oracle9iAS: Basic Administration		
<b>Exam Type:</b>	Oracle		
<b>Exam Code:</b>	1Z0-301	<b>Total Questions:</b>	157

D. PlsqlDatabasePassword

**Answer: A**

**Question: 23**

What does the Delegated Administration Service or Oracle9iAS SSO enable nonadministrative users to do?

- A. Create new SSO servers.
- B. Modify SSO user's personal data.
- C. Create new Oracle Internet Directories.
- D. Modify SSO administrator's schema location.

**Answer: B**

**Question: 24**

Examine the image showing the Oracle Directory Manager Menu and navigation bar.



Oracle Directory Manager has a double window interface. You want to obtain password credentials about the user appuser created with the Distributed Administration Service (DAS). Where do you get the appropriate information?

- A. Click the plus sign next to Server Management to expand the subtree, then navigate to Directory Server, where you get the information about the user.
- B. Click the plus sign next to Access Control Management, then navigate to the entry cn=DAS, where you get the information about the user.
- C. Click the plus sign next to Entry Management to expand the subtree, then drill down to the level of cn=Users to obtain the wanted information.
- D. Click the plus sign next to Schema Management, then navigate to the entry cn=Users, where you get the information about the user.
- E. Click the plus sign next to Password Policy Management, then navigate to the entry cn=DAS where you get the information about the user.
- F. Click the plus sign next to Password Verifier Management, then navigate to the entry cn=DAS where you get the information about the user.

**Answer: C**

<b>Exam Name:</b>	Oracle9iAS: Basic Administration		
<b>Exam Type:</b>	Oracle		
<b>Exam Code:</b>	1Z0-301	<b>Total Questions:</b>	157

**Question: 25**

You want to use Basic Authentication to protect access to your web site using Oracle HTTP Server password files. To accomplish this, you will use a <Location> or <Directory> block container in your httpd.conf configuration file. Which three Require directives are correct? (Choose three)

- A. Require valid-user
- B. Require valid\_user
- C. Require user <user\_list>
- D. Require group <group\_list>

**Answer: A, C, D**

**Question: 26**

Which component of an Oracle9iAS instance is responsible for accessing the configuration information for the Farm, reading changes that need to be propagated throughout the Farm, and updating the configuration information?

- A. DCM
- B. OPMN
- C. OC4J
- D. The OHS parent process
- E. An OHS child process

**Answer: B**

**Question: 27**

Which two protocols are available by default for the Oracle9iAS Containers for J2EE (OC4J) to receive communication when it is installed as a part of an Oracle9iAS Instance? (Choose two)

- A. HTTP
- B. ORMI
- C. HTTPS
- D. AJP12
- E. AJP13

**Answer: B, E**

**Question: 28**

In which two directories would you typically find the mod\_plsql configuration files? (Choose two)

- A. \$ORACLE\_HOME/network/admin
- B. \$ORACLE\_HOME/Apache/Apache/conf
- C. \$ORACLE\_HOME/Apache/dads/conf
- D. \$ORACLE\_HOME/Apache/modplsql/conf
- E. \$ORACLE\_HOME/Apache/Apache/htdocs

**Answer: B, D**

**Question: 29**

A collection of Oracle9iAS Instances that share the same Infrastructure but do not have identical configurations is referred to as a \_\_\_\_\_.

- A. Cluster
- B. Farm

<b>Exam Name:</b>	Oracle9iAS: Basic Administration		
<b>Exam Type:</b>	Oracle		
<b>Exam Code:</b>	1Z0-301	<b>Total Questions:</b>	157

- C. Instance
- D. Component Cluster

**Answer: B**

**Question: 30**

When you configure your application to run in Single Sign-On environment, you should register \_\_\_\_\_.

- A. mod\_osso as a partner application.
- B. mod\_osso as an external application.
- C. Each partner application with Single Sign-On server.
- D. All external applications with single sign-off facility.

**Answer: C**

**Question: 31**

In a secure Oracle9iAS environment, what is true regarding authentication of the client through the middle tier to the client database?

- A. Secure Sockets Layer protocol can be configured to authenticate the user end-to-end.
- B. Authentication cookies can be generated by the middle tier and passed to the client databases.
- C. The end users can be authenticated by the middle tier, and the middle tier can authenticate itself with client databases.
- D. Authentication cookies can be generated by the browser and passed through the middle tier to the client databases.
- E. The end users can be authenticated by the client database, and that authentication certification is maintained on the middle tier.

**Answer: C**

**Question: 32**

Which statement regarding authentication and restriction schemes for the Oracle HTTP Server is FALSE? (Choose the FALSE statement.)

- A. IP Address restriction allows you to grant or deny access to a specific IP address, or to an IP subnet.
- B. HTTPS uses the SSL protocol to ensure data privacy and data integrity.
- C. Distinguished Name-based authentication using certificates generated by Oracle Wallet Manager is enabled by default.
- D. Domain name restriction allows you to grant or deny access to a specific machine, part of a domain, or an entire domain.
- E. Basic Authentication requires the browser to send the user ID and password to the middle tier with each page request.
- F. Basic Authentication has the browser send the unencrypted username and password to the middle tier.

**Answer: C**

**Question: 33**

Which two security solutions enable the user to access multiple systems with one password? (Choose two)

- A. Firewalls
- B. Checksumming

<b>Exam Name:</b>	Oracle9iAS: Basic Administration		
<b>Exam Type:</b>	Oracle		
<b>Exam Code:</b>	1Z0-301	<b>Total Questions:</b>	157

- C. Single sign-on
- D. Grouping privileges
- E. Encryption/decryption
- F. Strong authentication

**Answer: C, F**

**Question: 34**

What are the five files that are used to configure mod\_plsql in a typical configuration?

- A. listener.ora, snmp\_ro.ora, ldap.ora, init.ora, and sqlnet.ora
- B. httpd.conf, oracle\_apache.conf, plsql.conf, dads.conf, and cache.conf
- C. httpd.conf, mod\_oc4j.conf, mod\_plsql.conf, mod\_osso.conf, and srm.conf
- D. principals.xml, server.xlm, default-website.xml, rmi.xml, and opmn.xml

**Answer: B**

**Question: 35**

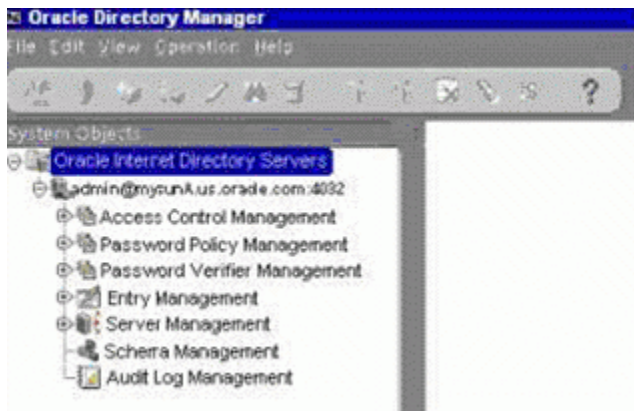
Which directive ensures that accesses to applications that are Single Sign-On enabled use SSL?

- A. AuthType
- B. SetHandler
- C. SSLRequiredSSL
- D. Deny from all

**Answer: C**

**Question: 36**

Exhibit:



Examine the image showing the Oracle Directory Manager Menu and navigation bar. It shows that you are connected to a directory mysunA. What are two ways you can disconnect from that directory? (Choose two)

- A. On the main menu bar, click File and then select Disconnect.
- B. On the main menu bar, click Operation and then select Disconnect.
- C. Select the admin@mysunA entry in the navigation bar, click Operation from the main menu, and then choose Disconnect.
- D. Select the admin@mysunA entry in the navigation bar, click File from the main menu, and then choose Disconnect.

<b>Exam Name:</b>	Oracle9iAS: Basic Administration		
<b>Exam Type:</b>	Oracle		
<b>Exam Code:</b>	1Z0-301	<b>Total Questions:</b>	157

E. Select the admin@mysunA entry in the navigation bar and click the Disconnect icon, which is the plug-in with a red cross.

**Answer: A, ?**

**Question: 37**

You do NOT need to set the PlsqlDatabaseUsername and PlsqlDatabasePassword directives in the DAD if the mod\_plsql authentication mode is \_\_\_\_\_.

- A. Basic
- B. CustomOwa
- C. GlobalOwa
- D. Single Sign-On

**Answer: A**

**Question: 38**

In a Directory environment which method would you use to make the directory highly available?

- A. Add new hardware resources to the LDAP server
- B. Distribute the LDAP server across multiple nodes
- C. Segment the directory tree and spread it across different LDAP servers
- D. Maintain and replicate the same data across multiple distributed LDAP servers

**Answer: D**

**Question: 39**

Which directive is valid, but has no effect on a UNIX system?

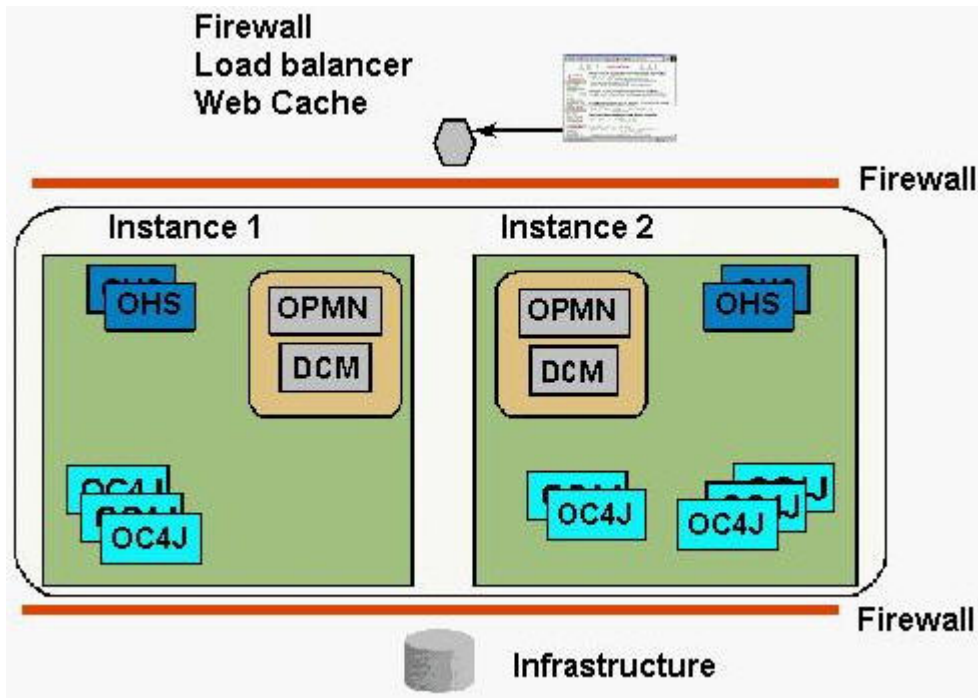
- A. Oc4jMount /j2ee/\*
- B. Oc4jCacheSize 32
- C. Oc4jMountCopy On
- D. IfModule mod\_oc4j.so
- E. Oc4jMount /j2ee/\* OC4J\_Demos

**Answer: B**

**Question: 40**

In some situations, the Oracle9i Application Server cluster is deployed entirely in the DMZ (Demilitarized Zone) between two firewalls. The load balancer or Web Cache sits outside the firewall in front of the Cluster, and the Infrastructure can sit behind a second firewall. This configuration is represented in the Exhibit.

Exam Name:	Oracle9iAS: Basic Administration		
Exam Type:	Oracle		
Exam Code:	1Z0-301	Total Questions:	157



In considering this type of deployment, which statement is FALSE? (Choose the FALSE statement.)

- A. The internal firewall must be configured to allow DCM requests to enter.
- B. The external firewall must be configured to allow HTTP requests to enter.
- C. The internal firewall must be configured to allow OPMN requests to enter.
- D. The communication between the Oracle HTTP Servers and OC4J does not need to cross a firewall.
- E. The customer database, as well as the Infrastructure, should be configured behind the internal firewall.
- F. The internal firewall must be configured to allow PL/SQL or J2EE requests to get to their data sources.

**Answer: C**

**Question: 41**

Which two processes are parts of an LDAP server instance? (Choose two.)

- A. Dispatcher
- B. OID Monitor
- C. LDAP server process
- D. OID Control Utility
- E. OID Replication process
- F. Oracle Directory Manager

**Answer: A, C**

**Question: 42**

When adding a new instance to an Oracle9i Application Server cluster, which process is responsible for accessing the Infrastructure and creating the required local configuration files?

<b>Exam Name:</b>	Oracle9iAS: Basic Administration		
<b>Exam Type:</b>	Oracle		
<b>Exam Code:</b>	1Z0-301	<b>Total Questions:</b>	157

- A. OPMN
- B. DCM
- C. An OC4J process
- D. The OHS parent process
- E. An OHS child process

**Answer: B**

**Question: 43**

You want to allow all clients from IP subnet 144.23.4 to be able to access specific static content in your Web site. You choose to implement this using the following Oracle HTTP Server directives:

```
<Directory static_directory>  
allow from 144.23.4  
</Directory>
```

Which Oracle HTTP Server Security Module must be included in your configuration to enable this feature?

- A. mod\_auth
- B. mod\_ossi
- C. mod\_access
- D. mod\_address
- E. mod\_auth\_anon

**Answer: C**

**Question: 44**

All the user credentials of a department are stored in the OID server. How will you identify a particular user entry uniquely?

- A. Using the user name.
- B. Using Distinguished Name.
- C. Using Directory Information Tree.
- D. Using Relative Distinguished Name.

**Answer: B**

**Question: 45**

What is true regarding Oracle9iAS Single Sign-On applications?

- A. Partner applications delete gate authorization to Single Sign-On server.
- B. Partner applications delete authentication to Single Sign-On server.
- C. External applications delegate authorization to Single Sign-On server.
- D. External applications delegate authentication to Single Sign-On server.

**Answer: B**

**Question: 46**

Which three files are found by default in the \$ORACLE\_HOME/j2ee/home/config directory?  
(Choose three)

- A. server.xml
- B. internal.xml
- C. targets0.xml

<b>Exam Name:</b>	Oracle9iAS: Basic Administration		
<b>Exam Type:</b>	Oracle		
<b>Exam Code:</b>	1Z0-301	<b>Total Questions:</b>	157

- D. principals.xml
- E. data-sources.xml

**Answer: A, D, E**

**Question: 47**

The surge protection feature of Oracle9iAS Web Cache enables you to \_\_\_\_\_.

- A. Cache partial pages.
- B. Compress documents that are requested.
- C. Invalidate noncacheable contents in the cache regularly.
- D. Limit the concurrent requests for non-cacheable content to origin servers.

**Answer: D**

**Question: 48**

What is the default location of most of the configuration files used by the Oracle HTTP Server (OHS)?

- A. \$HOME/Apache/conf
- B. \$HOME/Apache/Apache/conf
- C. \$ORACLE\_HOME/Apache/conf
- D. \$ORACLE\_HOME/Apache/Apache/conf

**Answer: D**

**Question: 49**

When Oracle9iAS Portal is installed, in which schema are its components stored in the Metadata Repository?

- A. SYS
- B. SYSTEM
- C. SCOTT
- D. OEM\_REPOSITORY
- E. A new schema used internally for Portal.

**Answer: E**

**Question: 50**

The OID server in your organization contains various details of the organization. You are asked to set up the hierarchy structure of your department in the OID server. What should you create?

- A. Naming Context
- B. Directory Schema
- C. Department Attribute
- D. Database table in the ODS schema with all the user details as rows

**Answer: A**

**Question: 51**

Which command will show the condition of the Oracle HTTP Server?

- A. dcmctl status -v
- B. dcmctl status -ohs



<b>Exam Name:</b>	Oracle9iAS: Basic Administration		
<b>Exam Type:</b>	Oracle		
<b>Exam Code:</b>	1Z0-301	<b>Total Questions:</b>	157

- C. dcmctl getState -v
- D. dcmctl getState -ohs

**Answer: C**

**Question: 52**

You are running several Oracle9iAS instances behind one Web Cache instance running on a different host.

The Web Cache is on ed-sun1.oracle.com:80. Web Cache expects to find the 9iAS instance you are configuring at ed-sun3.oracle.com:7780. You are using Portal. There is a firewall blocking direct client access to the 9iAS instances. Any directive not shown has its default value.

What is the correct configuration to allow rewritten requests to be handled by the Web Cache and passed through?

- A. Port 7780  
Listen 7780  
ServerName ed-sun3.oracle.com  
UseCanonicalName On
- B. Port 80  
Listen 7780  
ServerName ed-sun1.oracle.com  
ServerTokens Full
- C. Port 7780  
Listen 80  
ServerName ed-sun1.oracle.com  
ServerTokens prod
- D. Port 80  
Listen 80  
ServerName ed-sun3.oracle.com  
UseCanonicalName on
- E. Port 80  
Listen 7780  
ServerName ed-sun3.oracle.com  
ServerTokens prod
- F. Port 7780  
Listen 80  
ServerName ed-sun1.oracle.com  
ServerTokens Full

**Answer: B**

**Question: 53**

Why does SSL communication switch to using symmetric encryption after the negotiation phase?

- A. It is faster.
- B. It is more secure.
- C. It is easier to distribute.
- D. It is easier to administer.

**Answer: A**

**Question: 54**

What directive is used to reduce the overhead of reestablishing network connections?

- A. KeepAlive

<b>Exam Name:</b>	<b>Oracle9iAS: Basic Administration</b>		
<b>Exam Type:</b>	<b>Oracle</b>		
<b>Exam Code:</b>	<b>1Z0-301</b>	<b>Total Questions:</b>	<b>157</b>

- B. MaxSpareServers
- C. MinSpareServers
- D. MaxKeepAliveRequests

**Answer: A**

**Question: 55**

The number of users working with the OID server increases suddenly. Which two actions can you take to immediately maintain the performance of the OID server? (Choose two)

- A. Allocate more space to the underlying database.
- B. Increase the size of the memory of the OID server.
- C. Increase the number of server process by increasing the value of ORCLSERVERPROCS and restart the instance.
- D. Increase the number of database connections for each server process by increasing the value of ORCLMAXCC and restart the instance.

**Answer: C, D**

**Question: 56**

Why would you run the ssocfg.sh script in the \$ORACLE\_HOME/sso/bin directory?

- A. To change all references of HTTP in Single Sign-On URLs to HTTPS.
- B. To enable multiple Single Sign-On server processes.
- C. To configure the administrative user for Single Sign-On.
- D. To enable additional listener ports for Single Sign-On server.

**Answer: A**

**Question: 57**

When a user has been successfully authenticated by Oracle9iAS Single Sign-On server, what information about the user is passed to the partner application?

- A. password
- B. global ID
- C. privilege list
- D. previous login time

**Answer: B**

**Question: 58**

In an enterprise there are many users working with different applications. User credentials are stored in the OID server. You are asked to change some information for a particular user. Which three tools can you use to change the user information? (Choose three)

- A. SQLPlus Worksheet
- B. OID Configuration Assistant
- C. Oracle Directory Manager (ODM)
- D. Oracle Enterprise Manager (OEM)
- E. Delegated Administrative Service (DAS)
- F. Oracle Internet Directory Command-line tools

**Answer: C, E, F**

**Question: 59**

<b>Exam Name:</b>	<b>Oracle9iAS: Basic Administration</b>		
<b>Exam Type:</b>	<b>Oracle</b>		
<b>Exam Code:</b>	<b>1Z0-301</b>	<b>Total Questions:</b>	<b>157</b>

Which four security terms correctly match the item to its description? (Choose four.)

- A. Integrity uses a password to identify the user.
- B. Confidentiality ensures that data is kept private.
- C. Authentication determines the identity of the user.
- D. Availability can be accomplished using grouped privileges.
- E. Access control works with authorization to give the user access to data.
- F. Authorization determines if the user has the appropriate privileges to access the data.

**Answer: B, C, E, F**

**Question: 60**

In what order do the following steps occur during automatic deployment of an application within OC4J?

- A. OC4J detects new or changed application.
- B. OHS is transparently restarted.
- C. OC4J generates required OC4J specific application files.
- D. Files are placed in deployment directory.

- A. A B C D
- B. D C A B
- C. A C D B
- D. D A C B
- E. A D C B

**Answer: D**

**Question: 61**

The Oracle9iAS Single Sign-On administrative users should belong to the \_\_\_\_\_ administrative group.

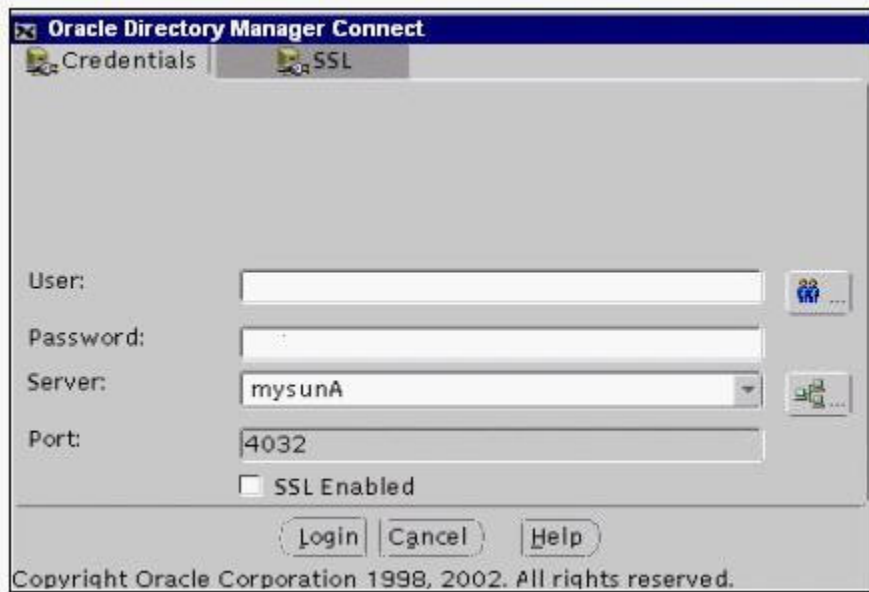
- A. iAS
- B. Database
- C. Sysadmins System
- D. Oracle Internet Directory

**Answer: A**

**Question: 62**

Examine the image of the Oracle Directory Manager dialog box.

Exam Name:	Oracle9iAS: Basic Administration		
Exam Type:	Oracle		
Exam Code:	1Z0-301	Total Questions:	157



It is the first time you connect to Oracle Directory Manager after an installation. What credentials do you need to provide?

- A. Enter oidadmin as user and welcome as password.
- B. Enter orcladmin as user and welcome as password.
- C. Enter ias\_admin as user and welcome as password.
- D. Enter oidadmin as user and the password of the ias\_admin user that has been assigned during the installation.
- E. Enter orcladmin as user and the password of the ias\_admin user that has been assigned during the installation.
- F. Enter ias\_admin as user and the password of the ias\_admin user that has been assigned during the installation.

**Answer: E**

**Question: 63**

Which tool do you use to delete the entire naming context or terminal entry node from the OID server?

- A. ldapdelete
- B. catalog.sh
- C. ldapmodifymt
- D. bulkdelete.sh

**Answer: D**

**Question: 64**

Which statement is true about object class inheritance?

- A. A superclass object class inherits all the attributes of the subclass object class.
- B. A subclass object class inherits all the attributes of the superclass object class.
- C. A subclass object class inherits only the optional attributes from the superclass object class.
- D. A superclass object class inherits only the mandatory attributes from the subclass object class.

Exam Name:	Oracle9iAS: Basic Administration		
Exam Type:	Oracle		
Exam Code:	1Z0-301	Total Questions:	157

**Answer: B**

**Question: 65**

Which mechanism does SSL include? (Choose all that apply)

- A. Encryption
- B. Key escrow
- C. Authentication
- D. Data integrity
- E. OS permissions
- F. Multitoken authentication

**Answer: A, C, D**

**Question: 66**

What best defines the principle of least privilege?

- A. Granting too few privileges can prevent a user from completing a task.
- B. At a minimum, all users should supply a password before accessing a service.
- C. At a minimum, a manager should have all the privileges of his or her employees.
- D. One should have access only to the data and services that are required to perform one's job.
- E. People lower in the organization's hierarchy should have fewer privileges than people higher in the hierarchy.

**Answer: D**

**Question: 67**

Which three security solutions are used to simplify security administration? (Choose three.)

- A. Use single sign-on
- B. Encrypt and decrypt data
- C. Monitor security breaches
- D. Delegate security authority
- E. Group privileges by job function
- F. Apply all security patches and workarounds

**Answer: A, D, E**

**Question: 68**

You change the administration port number of Oracle9iAS Web Cache using the WEB Cache Manager. Where is the detail stored?

- A. internal.xml
- B. webcache.xml
- C. internal\_admin.xml
- D. webcachetargets.xml

**Answer: B**

**Question: 69**

Which two commands can be used to start the Oracle HTTP Server (OHS)? (Choose two.)

- A. httpdsctl start
- B. dcmctl start -ohs
- C. dcmctl start -ct ohs

Exam Name:	Oracle9iAS: Basic Administration		
Exam Type:	Oracle		
Exam Code:	1Z0-301	Total Questions:	157

- D. dcmctl start -co ohs
- E. dcmctl start -i instance that contains the OHS

**Answer: C, E**

**Question: 70**

Which two protocols are used to communicate directly to an OC4J instance that is deployed as part of an Oracle9iAS instance? (Choose two)

- A. ORMI
- B. HTTPS
- C. HTTP
- D. AJP12
- E. AJP13

**Answer: A, E**

**Question: 71**

Documents matching the following regular expression are defined as being cacheable in the cacheability rules for your Web Cache:

`/.html?$/`

Your site has many .htm and .html files that are presented to Web visitors. Which file types will be created?

- A. The .html files would be cached, but not the .htm files.
- B. The .htm files would be cached, but not the .html files.
- C. Both the .html files and the .htm files would be cached.
- D. Neither the .html files nor the .htm files would be cached.

**Answer: C**

Check the "?" function.

**Question: 72**

Exhibit:

Exam Name:	Oracle9iAS: Basic Administration		
Exam Type:	Oracle		
Exam Code:	1Z0-301	Total Questions:	157

The screenshot shows the Oracle Enterprise Manager interface for a Web Cache. The 'General' section displays the following information:

Status	Up
Start Time	Jun 7, 2002 5:54:21 AM PDT
CPU Usage (%)	0.1
Memory Usage (MB)	3.211
Number of Cached Documents	0
Size of Cached Documents (MB)	0

The 'Activity' section shows a 'Graph unavailable' message and the following metrics:

Requests per Second	0
Data Served (MB/second)	0
Apology Pages Served (% of requests)	0
Open Connections	1

Navigation links at the bottom include 'Activity', 'Application Web Servers', 'Popular Cached Documents', 'Administration', and 'Web Cache Administration'.

In the Web Cache home page shown, which link would provide the total number of requests served by the Web Cache?

- A. Activity
- B. Requests per Second
- C. Popular Cached Documents
- D. Application Web Servers

**Answer: A**

**Question: 73**

Your company started a project to Web enable its Java applications. Your management prefers a fast standard-compliant J2EE server, and they have concerns about the manageability of their large user community. They prefer a solution with a single user repository. Which installation topology would you recommend?

- A. J2EE and Web Cache only
- B. Oracle9iAS Infrastructure only
- C. Single Sign-On Server and J2EE and Web Cache
- D. J2EE and Web Cache and Oracle Internet Directory
- E. Oracle9iAS Infrastructure and J2EE and Web Cache

**Answer: E**

**Question: 74**

What should the mod\_plsql authentication mode be set to for an Oracle Portal application?

- A. None
- B. Basic
- C. Customowa
- D. SingleSignOn

Exam Name:	Oracle9iAS: Basic Administration		
Exam Type:	Oracle		
Exam Code:	1Z0-301	Total Questions:	157

**Answer: D**

**Question: 75**

Your company has a very successful Web offering based on a single standalone Oracle9iAS J2EE and Web Cache installation. Your management wants to ensure performance as well as failover capabilities of their single J2EE server. They are planning to install Oracle9iAS Infrastructure and three additional J2EE and Web Cache installations on separate machines each working together in a cluster. Can the already existing and configured Oracle9iAS J2EE and Web Cache instance be configured to use the Oracle9iAS Infrastructure?

- A. No, you have to drop the existing Oracle9iAS J2EE and Web Cache installation.
- B. No, but the existing Oracle9iAS J2EE and Web Cache instance can coexist with the new installations.
- C. Yes, the already existing Oracle9iAS J2EE and Web Cache instance will be detected during the subsequent installation of an additional J2EE and Web Cache instance.
- D. Yes, but you need to install Oracle9iAS Infrastructure and then configure the existing Oracle9iAS instance manually to use the Oracle9iAS Infrastructure.
- E. No, Oracle9iAS Infrastructure must be installed first and cannot be used by already existing Oracle9iAS instances.
- F. Yes, during installation Oracle9iAS Infrastructure detects existing Oracle9iAS instances and associates them.

**Answer: D**

**Question: 76**

Exhibit:





<b>Exam Name:</b>	Oracle9iAS: Basic Administration		
<b>Exam Type:</b>	Oracle		
<b>Exam Code:</b>	1Z0-301	<b>Total Questions:</b>	157

Oracle Internet Directory has been installed as part of Oracle9iAS Infrastructure. Which two are stopped when you select Internet Directory and click Stop? (Choose two.)

- A. OID Monitor
- B. Oracle Management Server
- C. Oracle Directory Manager
- D. LDAP server instance(s)
- E. Oracle9i directory database and listener
- F. Oracle Internet Directory control utility

**Answer: A, D**

**Question: 77**

You want to use the Enterprise Manager Web site to manage your Oracle9iAS Instance on the host called my\_machine. In your browser's Address or Location text box, you enter a URL in this format:

http://my\_machine:<port>

What is the default port used by the Enterprise Manager Web site?

- A. 80
- B. 1521
- C. 1810
- D. 7777
- E. 7778
- F. There is not default.
- G. The port number must be specified during installation.

**Answer: C**

**Question: 78**

You are at the Oracle9iAS Instance Home Page for the Application Server IAS-1. The Current Status for this instance is 'Partially Up.' You click the command button labeled 'Restart IAS-1'. How will the components associated with IAS-1 be affected?

- A. All currently running components continue to run, and all stopped components will be started.
- B. All currently running components will be stopped gracefully, and only those components will be started.
- C. All currently running components will be stopped gracefully, and all configured components will be started.
- D. All currently running components will be terminated, and only those components will be started.
- E. All currently running components will be terminated, and all configured components will be started.

**Answer: C**

**Question: 79**

During an installation you need to be prepared to enter some information. Which two are required for a successful Oracle9iAS Infrastructure installation? (Choose two.)

- A. the database administration password for the metadata repository
- B. the username and password to log on to Oracle9iAS Single Sign-On Server
- C. the location from which the Enterprise Manager daemon should be started

<b>Exam Name:</b>	<b>Oracle9iAS: Basic Administration</b>		
<b>Exam Type:</b>	<b>Oracle</b>		
<b>Exam Code:</b>	<b>1Z0-301</b>	<b>Total Questions:</b>	<b>157</b>

- D. the database character set that should be used for the metadata repository
- E. to specify which Oracle9iAS repositories should be stored in the metadata repository
- F. the unique name for the Oracle9iAS Infrastructure instance and the ias\_admin password

**Answer: D, F**

**Question: 80**

What are the four major steps you should perform to develop your security policy? (Choose four.)

- A. Implement security procedures
- B. Monitor any breaches of security
- C. Define your security requirements
- D. Encrypt sensitive network traffic
- E. Develop security procedures and systems
- F. Select the people who should have input to the security policy

**Answer: A, C, E, F**

**Question: 81**

You are managing a catalog Web site for your company. An important cacheable document, sale\_items.html, has been updated by the Web developers. The correct version of this document needs to be presented to your many Web customers as quickly as possible. You verify that the document is in the cache and the status is valid. Using the Oracle9iAS Web Cache home page, what could be done to achieve this?

- A. No action is necessary.
- B. The updated document will automatically be reloaded the next time it is requested.
- C. Use the content invalidation mechanism, enter the path, and remove it from the cache so it will be reloaded the next time it is requested.
- D. Select the old version of the document in the cache and click the Reload Now command button.
- E. Update the Cacheability Rules and mark the document as Not Cacheable, so that the current version of the document will be read from the file system the next time it is requested.

**Answer: B**

**Question: 82**

You set the Trusted Subnets in Oracle9iAS Web Cache Security to "This Machine Only". What is permitted?

- A. All requests from the host machine only.
- B. Caching content from applications running on the same host only.
- C. All requests from the subnet in which the host machine is located.
- D. Administration and invalidation requests from the host machine only.

**Answer: D**

**Question: 83**

Examine a screenshot of the Deployment Wizard.

Exam Name:	Oracle9iAS: Basic Administration		
Exam Type:	Oracle		
Exam Code:	1Z0-301	Total Questions:	157

**Step 1:**  
Deploy Application: Select Application

J2EE Application:

Application Name:

**Step 2:**  
Deploy Application: URL Mapping for Web Modules

Name	URL Binding
	*/

You want to deploy a J2EE application to your remote application server machine. Your J2EE application consists of Web modules and is packaged in the file simple.ear, which is stored locally on your PC. The application should be administered under the name simple-test and the application should be accessible as mysimpleapp.

Which three are necessary to deploy your J2EE application? (Choose three.)

- A. The Deployment Wizard walks you through several deployment specific tasks. The two steps of the Deployment Wizard are not sufficient to deploy your J2EE application. You have to go through all steps and enter the needed information.
- B. The application has to be assembled correctly as an Enterprise Archive (EAR) file, with all the needed application and module deployment descriptors.
- C. The Deployment Wizard walks you through several deployment specific tasks but the information given during those two steps of the Deployment Wizard is sufficient to deploy your J2EE application.
- D. It is not necessary that the application is assembled as an Enterprise Archive (EAR) file with all the application and module deployment descriptors, because the Deployment Wizard will detect this and assemble a valid EAR file automatically.
- E. Enter the following at step 1 and 2 of the Deployment Wizard page:  
J2EE Application: Enter the path to the simple.ear file.  
Application Name: Enter simple-test.  
Map to URL: Enter /mysimpleapp.
- F. Copy the simple.ear file to your application server machine  
Enter the following at step 1 and 2 of the Deployment Wizard page:  
J2EE Application: Enter /mysimpleapp  
Application Name: Enter the path to the simple.ear.  
Map to URL: Enter /simple-test.

**Answer: B, C, E**

**Question: 84**

An application developer provides you with the LoginServlet.class file and informs you that the servlet needs to connect to your production database. As a Web Administrator, you are responsible for configuring the appropriate data source. No data

<b>Exam Name:</b>	<b>Oracle9iAS: Basic Administration</b>		
<b>Exam Type:</b>	<b>Oracle</b>		
<b>Exam Code:</b>	<b>1Z0-301</b>	<b>Total Questions:</b>	<b>157</b>

sources have been configured up to now. Which three are true regarding enabling the servlet to connect to the database? (Choose three.)

- A. You can use the preinstalled data source and customize it appropriately for your needs.
- B. To use the preinstalled data source you first need to delete the <data-source> entries.
- C. If it is a global data source that applies to all applications, the data source is configured at the application level for this application.
- D. Global data sources are specified in the data-sources.xml file and applications can refer to that.
- E. If it is a local data source that applies to only this application, the data source is configured at the application level for this application.
- F. Data sources are defined in the application.xml file and your application can know about those data sources only if the data-sources.xml file knows about it.

**Answer: A, D, E**

**Question: 85**

Examine a configuration example taken from httpd.conf.

```
<Directory /home/public/cgi-bin >
  AddHandler cgi-script .cgi
</Directory>
SSLEngine Off

<VirtualHost 123.123.123.123:4443>
  SSLEngine On
  <Location / >
    ...virtual host directives
    AddHandler server-parsed .shtml
  </Location>
</VirtualHost>
```

A <VirtualHost> container can enclose almost any directive acceptable to the main server. Which three statements are true? (Choose three.)

- A. The <Location> container allows Server-Side Includes (SSI) for this virtual host only.
- B. CGI scripts can be executed only from the main server, not from the <VirtualHost> container even if the URL resolves to a file within /home/public/cgi-bin.
- C. The usage of the Secure Sockets Layer (SSL) protocol can be defined only at the main server level. The settings in the <VirtualHost> container will have no effect because the main server setting is off.
- D. The <Location> container specifies a relative URL, and does not allow Server-Side Includes to be executed from this virtual host.
- E. CGI scripts enabled in the main server are executable also from the <VirtualHost> container if the URL resolves to a file within /home/public/cgi-bin.
- F. It is possible to define the usage of Secure Sockets Layer (SSL) on a virtual host basis or to override main server configuration settings.

**Answer: A, E, F**

**Question: 86**

How is the failure of an OPMN process handled?

- A. Dcmctl is responsible for monitoring OPMN, and restarts the process if it fails.
- B. If the OPMN process fails it must be started manually, or you must configure an OEM event to check and restart it.

<b>Exam Name:</b>	Oracle9iAS: Basic Administration		
<b>Exam Type:</b>	Oracle		
<b>Exam Code:</b>	1Z0-301	<b>Total Questions:</b>	157

- C. There is a shadow process to the OPMN process that is responsible for checking its health and restarting OPMN in case of a failure.
- D. OC4J instances ping the OPMN process monitoring them, In case of the failure of the OPMN process, the OHS instance that was the first installed on this node attempts to restart OPMN.
- E. Oracle HTTP Server Instances ping the OPMN process monitoring them. In case of the failure of the OPMN process, the OHS instance that was the first installed on this node attempts to restart OPMN.

**Answer: C**

**Question: 87**

Where is metadata information of the OID server stored?

- A. Attribute options
- B. Application attribute
- C. Operational attribute
- D. Structural object class

**Answer: C**

**Question: 88**

Which mod\_plsql directive protects procedures, packages, or schemas from being directly executed from a browser?

- A. PlsqlDefaultPage
- B. PlsqlPathAliasProcedure
- C. PlsqlExclusionList
- D. PlsqlBeforeProcedure

**Answer: C**

**Question: 89**

You are managing an Oracle9iAS Instance that has been configured to work with the Oracle Internet Directory for centralized password administration. Password for your authorized end users have been established. An end user wishes to change their password. Which statement is correct?

- A. Any end user can change their own password.
- B. Only the Web Administrator can change end user passwords.
- C. Only the Infrastructure Database Administrator can change end user passwords.
- D. Only the Web Administrator or Infrastructure Database Administrator can change end user passwords.

**Answer: A**

**Question: 90**

Which three directives are allowed only in a server level context and not in any other context? (Choose three.)

- A. Include
- B. ServerName
- C. ServerRoot
- D. MaxClients
- E. ServerAdmin
- F. DocumentRoot

<b>Exam Name:</b>	<b>Oracle9iAS: Basic Administration</b>		
<b>Exam Type:</b>	<b>Oracle</b>		
<b>Exam Code:</b>	<b>1Z0-301</b>	<b>Total Questions:</b>	<b>157</b>

G. DirectoryIncludes

**Answer: A, C, D**

**Question: 91**

The Web Cache Web site's invalidation messages can be sent to the target Web Cache's invalidation port through which two methods? (Choose two.)

- A. AJP
- B. HTTP GET
- C. HTTP POST
- D. Oracle Net
- E. HTTP GET WITH STRING

**Answer: B, C**

**Question: 92**

Your company is planning to develop an Enterprise Portal. Your management is also asking for enhanced report functionality to analyze the access and connection statistics. You want to follow the suggestions of the Installation Guide in the case of assigning machines and to install the appropriate installation type.

Which two steps must you take to have the desired functionality? (Choose two.)

- A. Install Oracle9iAS Infrastructure first, and then Portal and Wireless.
- B. Install Business Intelligence and Forms only and then Oracle9iAS Infrastructure.
- C. Install Oracle9iAS Infrastructure first, and then Business Intelligence and Forms.
- D. Assign one machine to host both the application server and Oracle9iAS Infrastructure.
- E. Assign one machine to be the Oracle9iAS Infrastructure host and a second machine to be the application server hosting J2EE and Web Cache.
- F. Assign one machine to be the Oracle9iAS Infrastructure host and a second machine to host the application server.

**Answer: C, F**

**Question: 93**

Which three security solutions are used to harden a service? (Choose three.)

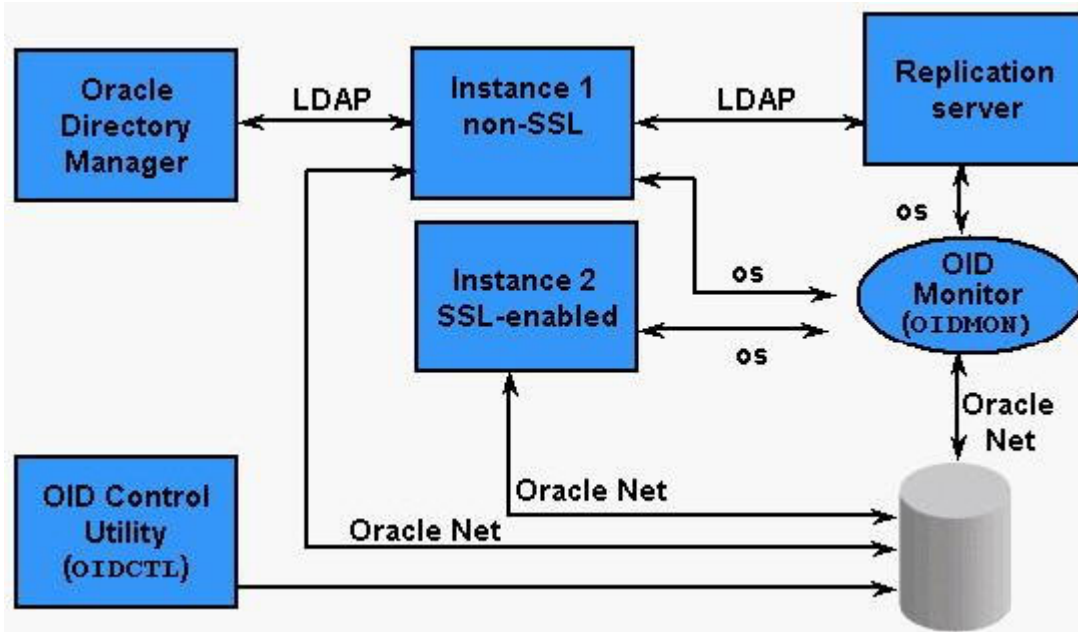
- A. Use single sign-on
- B. Remove unused services
- C. Test in-house development
- D. Delegate security authority
- E. Apply all security patches and workarounds

**Answer: B, C, E**

**Question: 94**

Examine a typical Oracle Internet Directory (OID) node in the following exhibit.

Exam Name:	Oracle9iAS: Basic Administration		
Exam Type:	Oracle		
Exam Code:	1Z0-301	Total Questions:	157



Which two statements describe the major components and their relationship correctly? (Choose two.)

- A. The LDAP server instances are a collection of OID server processes that service the LDAP directory requests.
- B. OID Monitor tracks and sends changes to replicated servers in an OID system. It uses LDAP to communicate with an LDAP server instance.
- C. An Oracle9i database stores the directory data. The database can reside on the same host as the LDAP servers, or on a separate host.
- D. OID Control Utility checks the state of the servers through mechanisms provided by the operating system.

**Answer: A, C**

**Question: 95**

Where is the Oracle9iAS Single Sign-On server user account information stored?

- A. .htaccess file
- B. principals.xml file
- C. Oracle Internet Directory
- D. Enterprise Manager Repository

**Answer: C**

**Question: 96**

Examine a screenshot of the Deployment Wizard in the following exhibit.

Exam Name:	Oracle9iAS: Basic Administration		
Exam Type:	Oracle		
Exam Code:	1Z0-301	Total Questions:	157

The screenshot shows the Oracle Enterprise Manager interface for the 'Deploy Web Application' wizard. At the top, the Oracle logo and 'Enterprise Manager' are visible. Below that, the title 'Deploy Web Application' is displayed. The form contains three input fields: 'Web Application' with a 'Browse...' button to its right, 'Application Name', and 'Map to URL'.

From your PC you want to deploy the Web application module packaged in simple-web.war, stored locally to your remote application server. The application should be administered under the name simple-web and the application should be accessible as mysimpleweb. What do you need to enter or do in order to deploy your application?

- A. Wrap the Web application into a J2EE application (.ear file) before deployment.  
Enter the following on the Deployment Wizard page:  
Web Application: Enter the path to the simple-web.war.  
Application Name: Enter simple-web.  
Map to URL: Enter /mysimpleweb.
- B. Enter the following on the Deployment Wizard page:  
Web Application: Enter the path to the simple-web.war.  
Application Name: Enter simple-web.  
Map to URL: Enter /mysimpleweb.
- C. Copy simple-web.war to your application server machine and wrap the web application into a J2EE application (.ear file) before deployment.  
Enter the following on the Deployment Wizard page:  
Web Application: Enter the path to the simple-web.war .  
Application Name: Enter /mysimpleweb.  
Map to URL: Enter simple-web.
- D. Enter the following on the Deployment Wizard page:  
Web Application: Enter the path to the simple-web.war .  
Application Name: Enter /mysimpleweb.  
Map to URL: Enter simple-web.
- E. Copy simple-web.war to your application server machine.  
Enter the following on the Deployment Wizard page:  
Web Application: Enter the path on the application server to the simple-web.war .  
Application Name: Enter simple-web.  
Map to URL: Enter /mysimpleweb.

**Answer: B**



<b>Exam Name:</b>	Oracle9iAS: Basic Administration		
<b>Exam Type:</b>	Oracle		
<b>Exam Code:</b>	1Z0-301	<b>Total Questions:</b>	157

**Question: 97**

You are required to export the data from the OID server to a format readable by any LDAP compliant directory. Which tool will you use?

- A. Export
- B. Idapaddmt
- C. SQL\* Loader
- D. Idapcompare
- E. Idifwrite

**Answer: E**

**Question: 98**

Which two features describe the Oracle9iAS Containers for J2EE (OC4J) implementation of JavaServer Pages? (Choose two.)

- A. Supports custom tag libraries
- B. Allows container managed persistence
- C. Retains translated servlet code for extended error reporting
- D. Supports simple and complex object relational mapping for entity beans
- E. Simple and complex OR mapping

**Answer: A, C**

**Question: 99**

You want to access the Web Cache Manager from a browser. Which process must have already been started using the webcachectl?

- A. Web Cache cache server
- B. Web Cache admin server
- C. Enterprise Manager daemon
- D. Web Cache auto-restart monitor

**Answer: B**

**Question: 100**

A collection of Oracle9iAS Installs that share the same Infrastructure and have identical configurations is referred to as a \_\_\_\_\_.

- A. Cluster
- B. Farm
- C. Instance
- D. Component Cluster

**Answer: A**

**Question: 101**

Which two are the valid steps of an OID server accepting a LDAP client request and then returning the required data to the client? (Choose two.)

- A. OID server and Oracle9i database communicate using LDAP.
- B. C APIs use LDAP to connect to a running instance of OID server.
- C. The OID server converts LDAP to C APIs and sends the result to the client.
- D. The step of OID server authenticating a LDAP client is called binding.

<b>Exam Name:</b>	Oracle9iAS: Basic Administration		
<b>Exam Type:</b>	Oracle		
<b>Exam Code:</b>	1Z0-301	<b>Total Questions:</b>	157

**Answer: B, D**

**Question: 102**

You have been asked by your management to install Oracle9iAS Portal. During the installation process you selected Oracle9i Application Server with the installation type Portal and Wireless. Which three Oracle9iAS components are installed as part of the installation type Portal and Wireless? (Choose three.)

- A. Oracle HTTP Server
- B. Oracle9iAS Web Cache
- C. Oracle9iAS Discoverer
- D. Oracle Management Server
- E. Oracle9iAS Single Sign-On Server
- F. Oracle9iAS Containers for J2EE (OC4J)
- G. Oracle9iAS Enterprise Manager Console

**Answer: A, B, F**

**Question: 103**

Which two processes are required to meet the principle of least privilege? (Choose two.)

- A. Authenticating users
- B. Developing checklists
- C. Authorizing data access
- D. Developing checksum keys
- E. Assembling your security team
- F. Encrypting and decrypting data

**Answer: A, C**

**Question: 104**

What is the Default SID of the Infrastructure Metadata Repository?

- A. infra
- B. iasdb
- C. iasmr
- D. orcl
- E. There is no default. This value must be provided at Installation.

**Answer: B**

**Question: 105**

Mod\_oc4j is configured by which file?

- A. jms.xml
- B. server.xml
- C. mod\_oc4j.conf
- D. principals.xml
- E. default-web-app.xml

**Answer: C**

**Question: 106**

Which statement regarding Oracle9iAS Single Sign-On applications is true?

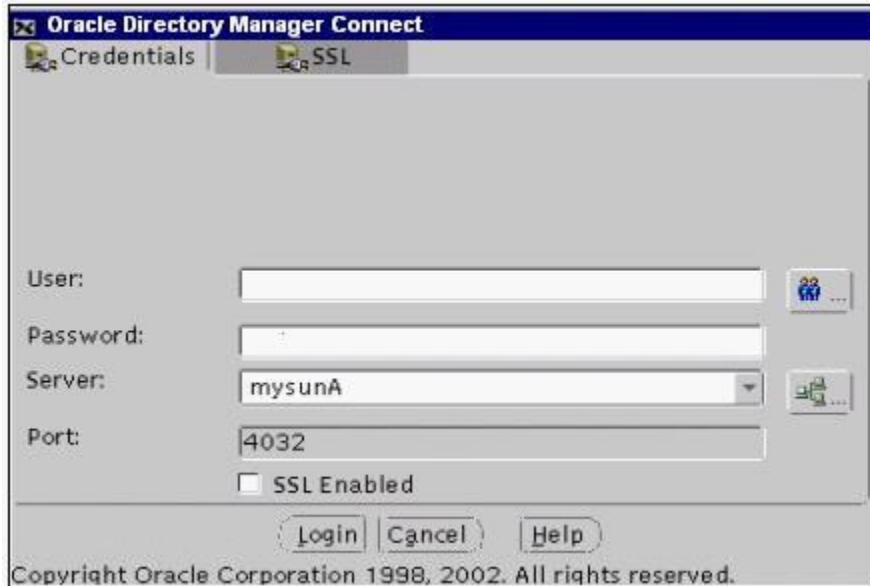
<b>Exam Name:</b>	Oracle9iAS: Basic Administration		
<b>Exam Type:</b>	Oracle		
<b>Exam Code:</b>	1Z0-301	<b>Total Questions:</b>	157

- A. External applications cannot store authentication information in Single Sign-On database.
- B. External applications use the password file of the operating system to authenticate users.
- C. External applications can store authentication information in the Single Sign-On database.
- D. External applications delegate the authentication function to the Single Sign-On server.

**Answer: C**

**Question: 107**

Examine the image of the Oracle Directory Manager dialog box.



The dialog box shows the credentials for your Oracle Internet Directory running on host mysunA on port 4032. It is the first time that you want to connect to the Oracle Internet Directory running on mysunB listening on port 4036.

Which two steps should you take to connect to the Oracle Internet Directory?(Choose two.)

- A. Enter orcladmin as user and welcome as password.
- B. Enter orcladmin as user and the <ias\_admin> password that has been assigned during the installation.
- C. Enter oidadmin as user and the <ias\_admin> password that has been assigned during the installation.
- D. Click the drop-down list button at the end of the server field and select mysunB. The port is changed automatically.
- E. Click the directory icon on the right side of the server field, which opens the Select Directory Server box, where you can add the Directory Server.
- F. Click in the Server field and enter mysunB; the port field is then available to be changed to 4036.

**Answer: B, E**

**Question: 108**

Which two are characteristics of a directory? (Choose two.)

- A. Data is stored in the form of rows in the directory.
- B. Data stored in directory is uniquely identified using an attribute.

<b>Exam Name:</b>	<b>Oracle9iAS: Basic Administration</b>		
<b>Exam Type:</b>	<b>Oracle</b>		
<b>Exam Code:</b>	<b>1Z0-301</b>	<b>Total Questions:</b>	<b>157</b>

- C. The primary function of a directory is storage and fast retrieval of data.
- D. Data is stored in the directory using a universally accepted naming model.

**Answer: C, D**

**Question: 109**

How should you propagate the change in content at the origin server to the Oracle9iAS Web Cache?

- A. restart the Oracle9iAS Web Cache
- B. copy the content to the disk in Oracle9iAS Web Cache
- C. send an invalidation message to the Oracle9iAS Web Cache
- D. send a browser request to the Oracle9iAS Web Cache for the document

**Answer: C**

**Question: 110**

Your company is responsible for the Web offerings of five radio stations (stationA, stationB, and so on) that can be accessed using URLs such as www.stationA.com or www.stationB.com. You want to share one IP address and one Oracle HTTP Server for all radio stations, but provide different home pages and sets of documents for each station. Which two actions will meet your requirements? (Choose two.)

- A. Use the key directive NameVirtualHost, which tells Oracle HTTP Server that requests to a specific IP address will be subdivided by name.
- B. Use the key directive ServerName, which tells Oracle HTTP Server that requests to a specific IP address will be subdivided by name.
- C. Configure a default <Directory /> container and four additional <Location> containers that include the settings to route incoming requests to different sets of documents
- D. Configure five <Directory /> containers that route incoming requests on different URLs to different sets of documents.
- E. Configure a default <VirtualHost> container and four additional <Location> containers that route incoming requests to different sets of documents.
- F. Configure five <VirtualHost> containers that steer incoming requests on different URLs to different sets of documents.

**Answer: A, F**

**Question: 111**

Which statement concerning Oracle9iAS application clusters is true?

- A. All instances in an application cluster must be run on the same node.
- B. All of the instances in an application cluster share the same ORACLE\_HOME.
- C. Each instance in an application cluster may run on a different node.
- D. An instance may belong to one or more application clusters, as long as they are identically configured.
- E. Applications can be deployed to specific instances in the application cluster to take advantage of resources available on different nodes.

**Answer: C**

**Question: 112**

Which three files are referenced directly from server.xml? (Choose three.)

- A. web.xml

<b>Exam Name:</b>	Oracle9iAS: Basic Administration		
<b>Exam Type:</b>	Oracle		
<b>Exam Code:</b>	1Z0-301	<b>Total Questions:</b>	157

- B. jms.xml
- C. ejb.xml
- D. rmi.xml
- E. server.log

**Answer: B, D, E**

**Question: 113**

Which directive specifies an e-mail address to be returned in Server messages?

- A. ServerMail
- B. ServerName
- C. ServerAdmin
- D. ServerOwner

**Answer: C**

**Question: 114**

Information about real objects is stored as \_\_\_\_\_.

- A. Entries
- B. Object classes
- C. Attribute types
- D. Attribute values

**Answer: A**

**Question: 115**

You are the Web Administrator managing an Application Server that has been configured to use an Infrastructure database. In this environment, which statement is true regarding the database usernames SYS and SYSTEM?

- A. These usernames are used to manage the entire Infrastructure database.
- B. These usernames do not exist in the Infrastructure database. The Web Administrator username must be used for all management functions.
- C. These usernames are used to perform regular Database Administrator tasks, but the Web Administrator username must be used for other management functions.
- D. The username SYS is used to start up and shut down the Infrastructure database, but the username SYSTEM is used for other all other management functions.
- E. The username SYS is used to start up and shut down the Infrastructure database. The username SYSTEM does not exist in the Infrastructure database.
- F. These usernames are used to start up and shut down the Infrastructure database, but the Web Administrator username must be used for other all other management functions.

**Answer: C**

**Question: 116**

You are designing your company's application server. You will use Oracle9iAS Containers for J2EE (OC4J). You must also meet these requirements:

1. The application server has a centralized user repository to ease user management.
2. The application server offers single sign-on capabilities.
3. The application server administration tool will be integrated into the already existent database administration architecture, which uses the three-tier Oracle Enterprise Manager.

Exam Name:	Oracle9iAS: Basic Administration		
Exam Type:	Oracle		
Exam Code:	1Z0-301	Total Questions:	157

Which two must you install to fulfill all requirements? (Choose two.)

- A. Oracle9iAS Infrastructure
- B. Oracle9i database with Internet File System
- C. Oracle9i database with Oracle Internet Directory
- D. Oracle9i Application Server using J2EE and Web Cache installation type
- E. Oracle9iAS Infrastructure using J2EE and Web Cache installation type
- F. Oracle9i Application Server using Oracle Internet Directory installation type

**Answer: A, D**

**Question: 117**

Examine a screenshot of OEM Web site.



Oracle Internet Directory has been installed as part of Oracle9iAS Infrastructure. Which two components are started when you select Internet Directory and click Start? (Choose two.)

- A. The Oracle Directory Manager is started.
- B. Oracle Internet Directory control utility is started.
- C. The OID Monitor is started if the Oracle9i metadata repository and the database listener are already running.
- D. The Oracle9i directory database and the database listener are started, if they are not already running.
- E. The Oracle Management Server is started, if the Oracle9i metadata repository and the database listener are already running.
- F. The LDAP server instance(s) is/are started if the Oracle9i metadata repository and the database listener are already running.

Exam Name:	Oracle9iAS: Basic Administration		
Exam Type:	Oracle		
Exam Code:	1Z0-301	Total Questions:	157

**Answer: C, F**

**Question: 118**

You are viewing the Farm Home Page for the farm that contains Instance IAS-1. You wish to observe operating system information for the node where IAS-1 has been started. Which operation would allow you to navigate to the correct Host Home Page?

- A. On your Farm Home Page, click the Host link next to the Instance IAS-1.
- B. On your Farm Home Page, select Instance IAS-1 and click the 'Host' command button.
- C. On your Farm Home Page, click on the Instance IAS-1 link. From the Instance Home Page, click the 'Host' command button in the Administration Section.
- D. On your Farm Home Page, click the Instance IAS-1 link. From the Instance Home Page, click the Host link in the General section.

**Answer: D**

**Question: 119**

Which directive controls the number of httpd processes spawned initially on UNIX?

- A. MaxClients
- B. StartServers
- C. MinSpareServers
- D. MaxRequestsPerChild

**Answer: B**

**Question: 120**

The Oracle9iAS installation types are organized in subsets, which means that the basic one is included in the next higher one.

For example A < B means A is included in B (all Oracle9iAS components installed with A are included in B.) Which order correctly describes the organization of Oracle9iAS installation types?

- A. Business Intelligence and Forms < J2EE and Web Cache < Portal and Wireless
- B. Oracle9iAS Core < Oracle9iAS Standard Edition < Oracle9iAS Enterprise Edition
- C. J2EE and Web Cache < Portal and Wireless < Business Intelligence and Forms
- D. Oracle9iAS Developer Kits < Oracle9i Application Server < Oracle9iAS Infrastructure
- E. Oracle HTTP Server < Oracle9iAS Web Cache < Oracle9iAS Containers for J2EE
- F. Oracle9iAS Application Server < Oracle9iAS Standard Edition < Oracle9iAS Enterprise Edition

**Answer: C**

**Question: 121**

How does the Oracle HTTP Server pick an OC4J process to which to assign a request?

- A. mod\_oc4j picks a process from the routing table.
- B. mod\_oc4j is configured with processes available to it in mod\_oc4j.conf.
- C. mod\_oc4j forwards the request to the appropriate island, which assigns a process.
- D. mod\_oc4j forwards the request to the appropriate cluster, which assigns a process.

**Answer: A**

**Question: 122**

What is true about custom authentication mode of applications using mod\_plsql?

<b>Exam Name:</b>	<b>Oracle9iAS: Basic Administration</b>		
<b>Exam Type:</b>	<b>Oracle</b>		
<b>Exam Code:</b>	<b>1Z0-301</b>	<b>Total Questions:</b>	<b>157</b>

- A. Custom authentication is the default authentication mode.
- B. Custom authentication is generally done at the database level.
- C. Custom authentication uses a dynamic username/password combination in the DAD.
- D. A customized function is invoked for authentication in custom authentication mode.

**Answer: D**

**Question: 123**

You want to protect all procedures in SYS and HR schema from being directly executed from a browser. Which mod\_plsql directive(s) should you use?

- A. PlsqlExclusionList \*.\*
- B. PlsqlExclusionList sys, hr.\*
- C. PlsqlExclusionList sys.\*, hr.priv.\*
- D. PlsqlExclusionList hr.\*  
PlsqlExclusionList sys.\*

**Answer: D**

**Question: 124**

What should you do to effect a change you have made to Trusted Subnets for Oracle9iAS Web Cache?

- A. restart the application servers
- B. send any request to the Web Cache
- C. restart the Web Cache using webcachectl restart
- D. send an invalidation request from the trusted host

**Answer: C**

**Question: 125**

You have already installed one Oracle9iAS J2EE and Web Cache instance on one machine, which is associated with Oracle9iAS Infrastructure hosted on a second machine. You want to install a subsequent J2EE and Web Cache instance on your first machine. Which two are true about subsequent installations, compared to the first installation? (Choose two.)

- A. There is no difference. Both installations must use the same Oracle Home directory.
- B. The subsequent J2EE and Web Cache installation must use a different Oracle Home directory.
- C. It is not possible to install a subsequent J2EE and Web Cache instance on the same machine.
- D. The subsequent J2EE and Web Cache installation cannot use the existing Oracle9iAS Infrastructure.
- E. Oracle Universal Installer detects previous installations and ensures that the Oracle Enterprise Manager daemon is running only once on a machine.
- F. Oracle Universal Installer ensures that the Oracle Enterprise Manager daemon is running once for each Oracle9iAS instance on the machine.
- G. It is not possible to install a subsequent J2EE and Web Cache instance as the same operating system user.

**Answer: B, E**

**Question: 126**

You created an Oracle9i Application Server cluster using Enterprise Manager. You want to add an instance to the cluster. Using the OEM Farm home page, which steps should you use to add a new instance to an existing cluster?



<b>Exam Name:</b>	Oracle9iAS: Basic Administration		
<b>Exam Type:</b>	Oracle		
<b>Exam Code:</b>	1Z0-301	<b>Total Questions:</b>	157

- Right-click the Instance name, and select the Join Cluster menu option. Select the Cluster name from the pop-up window.
- Right-click the Cluster name, and select the Add to Cluster menu option. Select the Instance name from the pop-up window.
- Select the radio button by the Instance name. Click the Join Cluster command button.
- Click the Instance name, and drag the name onto the Cluster name. Click the Confirm command button in the pop-up window.
- Click the Add to Cluster command button. Select the Cluster name and the Instance name from the drop-down lists presented. Click the Confirm command button.

**Answer: C**

**Question: 127**

One of the responsibilities of the Web administrator is to balance security mechanisms to safeguard the Oracle HTTP Server against access and authority necessary for users to perform their work. With that in mind, which guideline is correct?

- Ensure that services such as FTP are enabled for users to access.
- Make sure that scripting mechanisms are always available for use.
- Ensure that accounts and passwords used by sample and example applications are enabled on servers running in production environment.
- When deploying software, change the default passwords on any provided accounts.
- When assigning privileges to modules, use the highest levels of privilege so the modules can perform any task.

**Answer: D**

**Question: 128**

Exhibit:

- `<DirectoryMatch>` containers and regular expression-based `<Directory>` containers are processed.
- Contexts of `<Directory>` container (not based on regular expressions) and `.htaccess` files are processed simultaneously, with the `.htaccess` directives overriding the directives of the `<Directory>` container.
- `Location` and `LocationMatch` are applied.
- Directives from `Files` and `FilesMatch` containers are merged.

The Oracle HTTP Server has a defined order in which it merges directives together into one course of action. What is the correct order in which directives are applied and merged together?

- A C B D
- B A C D
- B A D C
- D A B C
- C B A D
- D B C A
- C D A B
- A D C B

**Answer: C**

**Question: 129**

Which directive controls the beginning point of relative paths for other directives?

Exam Name:	Oracle9iAS: Basic Administration		
Exam Type:	Oracle		
Exam Code:	1Z0-301	Total Questions:	157

- A. \$HOME
- B. ServerRoot
- C. DocumentRoot
- D. \$ORACLE\_HOME

**Answer: B**

**Question: 130**

Which two sets of directives are allowed inside a <VirtualHost> container? (Choose two.)

- A. Directory, Location, Files, Limit
- B. Directory, Location, Listen, BindAddress
- C. ServerAdmin, AddHandler, SetHandler, Port
- D. VirtualHost, LoadModule, AddModule, IfDefine
- E. ServerAdmin, ServerName, DocumentRoot, ErrorLog
- F. ServerName, VirtualHost, DocumentRoot, TransferLog

**Answer: A, E**

**Question: 131**

What do the Oracle9iAS Single Sign-On partner applications use to authenticate users?

- A. htaccess file
- B. URL rewriting
- C. mod\_osso cookie
- D. password file of the operating system

**Answer: C**

**Question: 132**

Which user account is assigned by default as the Oracle9iAS Single Sign-On administrator when Oracle9iAS is installed?

- A. sys
- B. orasso
- C. orcladmin
- D. ias\_admin

**Answer: C**

**Question: 133**

You are asked to load a huge number of entries to the OID server. To accomplish this task, which three criteria must be met? (Choose three.)

- A. OID server instance should not be running.
- B. OID server instance is up and running with users connected to it.
- C. The directory should be empty before starting this task using batch maintenance tool.
- D. The file used for the task should not contain any inconsistent and duplicate entries.

**Answer: A, C, D**

**Question: 134**

What is the port used by the infrastructure database listener?

<b>Exam Name:</b>	<b>Oracle9iAS: Basic Administration</b>		
<b>Exam Type:</b>	<b>Oracle</b>		
<b>Exam Code:</b>	<b>1Z0-301</b>	<b>Total Questions:</b>	<b>157</b>

- A. 80
- B. 1521
- C. 1810
- D. 7777
- E. 7778
- F. There is no default. The port number must be specified during Installation.

**Answer: B**

**Question: 135**

How are requests routed from the Oracle HTTP Server (OHS) to Oracle9iAS Containers for J2EE (OC4J)?

- A. from mod\_oc4j to an OC4j instance using AJP12
- B. from mod\_oc4j to an OC4j instance using AJP13
- C. from mod\_oc4j to an OC4j instance using HTTPS
- D. from mod\_oc4j to an OC4j instance using HTTP
- E. from mod\_oc4j to an OC4j instance using ORMI

**Answer: B**

**Question: 136**

Which statement is true when an Oracle9iAS Single Sign-On session reaches the session duration limit?

- A. Single Sign-On server should be restarted.
- B. The session will be terminated and changes rolled back.
- C. The user will be removed from the Single Sign-On server.
- D. The user will have to authenticate with Single Sign-On server again to continue with the session.

**Answer: D**

**Question: 137**

The following list includes all of the security requirements for your organization:

- A. Your web site contains only data that can be queried by the public.
- B. The data in your Accounting application is only accessible by the Finance department.
- C. Data in your Personnel application have the following access requirements:
  - i. People outside of the organization have access to employee names and phone numbers.
  - ii. The Human Resources department has access to all data.
  - iii. The employee's manager has access to a subset of data about the employee.
  - iv. Employees can update some of the data in their own records.
  - v. All employees can access the organization chart, employees names, phone numbers and addresses.
- The data in the Order Entry application is only accessible by the Finance and Sales department.
- D. The data in the Marketing application is accessible by the following persons:
  - i. The public has access to some of the data.
  - ii. The Marketing department maintains all of the data.

To make it easier to secure your data, you decide to categorize your data by the level of security required.

Which of the following sets of categories simplifies your requirements while ensuring that your data is secure?

<b>Exam Name:</b>	<b>Oracle9iAS: Basic Administration</b>		
<b>Exam Type:</b>	<b>Oracle</b>		
<b>Exam Code:</b>	<b>1Z0-301</b>	<b>Total Questions:</b>	<b>157</b>

- A. Four categories, with one for each application.
- B. Two categories:
  - o Public data is accessible by anyone.
  - o Internal data is accessible only by employees.
- C. Four categories:
  - o Public data is accessible by anyone.
  - o Partner data is accessible by customers.
  - o Internal data is accessible by any employee.
  - o Restricted data is accessible by specific employees.
- D. Three categories:
  - o Public data is accessible by anyone.
  - o Internal data is accessible only by employees.
  - o Restricted data is accessible only by specific employees.

**Answer: D**

**Question: 138**

You have multiple OC4J instances. What are two ways to check the status of all your OC4J instances? (Choose two.)

- A. dcmctl status -v
- B. dcmctl getState -v
- C. dcmctl status -ct oc4j -v
- D. dcmctl status -co home -v
- E. dcmctl getState -co home -v
- F. dcmctl getState -ct oc4j -v

**Answer: B, F**

**Question: 139**

In which context would you incorporate the SSLEngine On directive to enable SSL?

- A. Location
- B. Directory
- C. VirtualHost
- D. DocumentRoot

**Answer: C**

**Question: 140**

When you first connect to the Enterprise Manager Web site, you are presented with a username/password dialog box. You want to log in as the Administrator with the username ias\_admin. What is the default password that you need to enter in the password field for the Administrator's account?

- A. Enter in the password field: administrator
- B. Enter in the password field: ias\_admin
- C. Enter in the password field: oracle
- D. Enter in the password field: manager
- E. There is no default. The password is the one that has been specified for ias\_admin during the installation.

**Answer: E**

**Question: 141**

<b>Exam Name:</b>	Oracle9iAS: Basic Administration		
<b>Exam Type:</b>	Oracle		
<b>Exam Code:</b>	1Z0-301	<b>Total Questions:</b>	157

Where in OEM is the proper place to configure the default port for the Oracle HTTP Server (OHS) without editing the configuration file?

- A. Instance page
- B. HTTP Server main page
- C. HTTP Server Properties page
- D. HTTP Server Advanced Properties page

**Answer: C**

**Question: 142**

Review the six steps shown:

- A: Develop security procedures and systems
- B: Monitor any breaches of security
- C: Define your security requirements
- D: Implement security procedures
- E: Encrypt sensitive network traffic
- F: Select the people who should have input to the security policy

Which should you perform to develop your security policy, and what is the correct order?

- A. ADBE
- B. BACE
- C. BACD
- D. FCAD
- E. FEDC

**Answer: D**

**Question: 143**

You are managing an Oracle9i Application Server cluster. You deploy a J2EE application using either OEM or a command-line mechanism.

When a J2EE application is deployed, how do the processes in the instance and application cluster function?

- A. DCM updates the Infrastructure and creates local files. It notifies the OPMN processes through the application server cluster. Remote OPMN notify their local OHS, which reads the Infrastructure and creates the necessary local files.
- B. DCM updates the Infrastructure and creates local files. It notifies other DCM processes through the application server cluster, which read the Infrastructure and create the necessary local files. DCM notifies the OHS to pick up the changes.
- C. OPMN updates the Infrastructure and creates local files. It notifies other OPMN processes through the application server cluster, which read the Infrastructure and create the necessary local files. OPMN notifies the OHS to pick up the changes.
- D. OPMN notifies the local DCM, which updates the Infrastructure and creates local files. OPMN notifies other OPMN processes through the application server cluster. Remote OPMN notify their local DCM process, which reads the Infrastructure and creates the necessary local files. OPMN notifies the OHS to pick up the changes.
- E. DCM updates the Infrastructure and creates local files. It notifies the OPMN processes through the application server cluster. Remote OPMN notify their local DCM process, which reads the Infrastructure and creates the necessary local files. OPMN notifies the local OHS to pick up the changes.

**Answer: E**

<b>Exam Name:</b>	Oracle9iAS: Basic Administration		
<b>Exam Type:</b>	Oracle		
<b>Exam Code:</b>	1Z0-301	<b>Total Questions:</b>	157

**Question: 144**

Which three sets of files are used to configure OC4J? (Choose three.)

- A. SSL configuration files
- B. HTTP configuration files
- C. OC4J server configuration files
- D. OC4J specific application configuration files
- E. J2EE standard application configuration files

**Answer: C, D, E**

**Question: 145**

You are using Basic Authentication to protect company-internal Web content. Your httpd.conf file contains this block directive fragment:

```
<Location /internal>
AuthType Basic
AuthGroupFile /ias/Apache/Apache/groups
...
```

Which statement concerning the group authentication is true?

- A. A user may belong to more than one group.
- B. The group authentication file contains encoded data.
- C. The group authentication file is stored in the Infrastructure.
- D. The group authentication file is maintained with the htpasswd utility.

**Answer: A**

**Question: 146**

Which two should you do if a standard OID server object class does not contain a mandatory attribute that you require? (Choose two.)

- A. Define a new base object class.
- B. Add an optional attribute to the standard class.
- C. Add a mandatory attribute to the standard object class.
- D. Define a new object class as a subclass of the standard object class.

**Answer: A, D**

**Question: 147**

Under which directory will you find OC4J specific configuration files (orion-web.xml, orion-ejb.xml, and so on) for an OC4J instance named "home"?

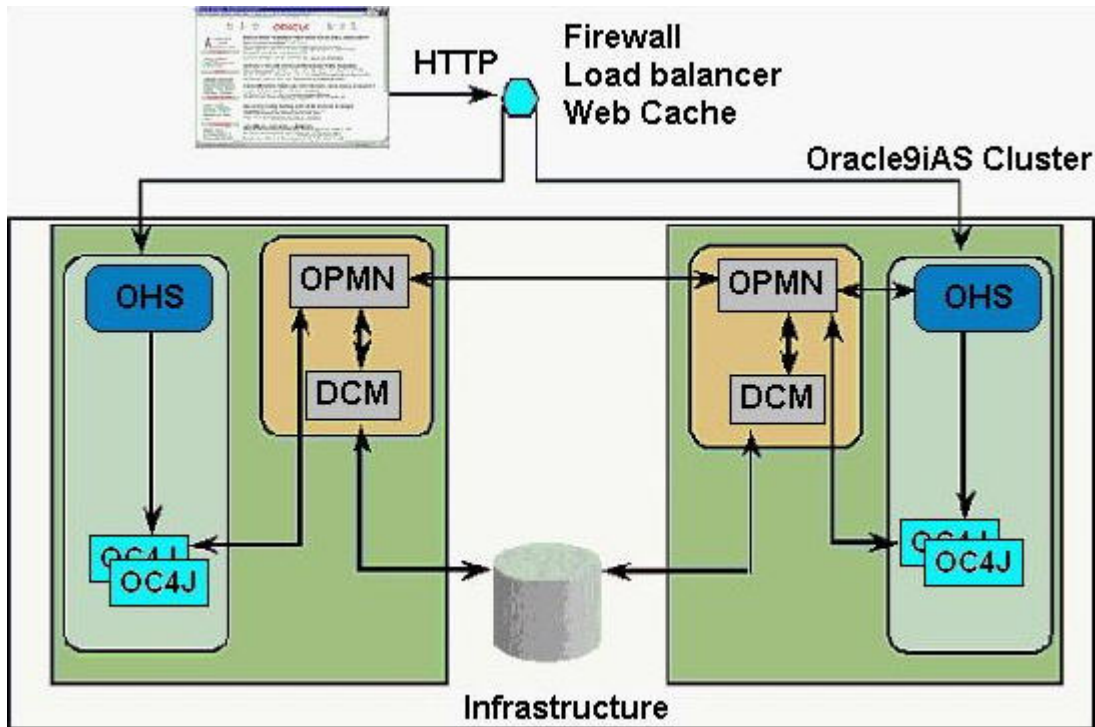
- A. \$ORACLE\_HOME/j2ee/home/config
- B. \$ORACLE\_HOME/j2ee/home/deployments
- C. \$ORACLE\_HOME/j2ee/home/default-web-app
- D. \$ORACLE\_HOME/j2ee/home/application-deployments

**Answer: D**

**Question: 148**

Exhibit:

Exam Name:	Oracle9iAS: Basic Administration		
Exam Type:	Oracle		
Exam Code:	1Z0-301	Total Questions:	157



You are managing an Oracle9iAS Cluster as illustrated in the image. During a period of high volume activity, the Oracle9iAS HTTP Server on one of the nodes goes down. How is this detected, and what activities take place at that time?

- The death of the OHS will be detected by an OPMN process, and that OPMN process will update the Instance log files with an error message.
- The death of the OHS will be detected by the DCM process, and the DCM process will update the Instance log files with an error message.
- The death of the OHS will be detected by the DCM process, and the DCM process will automatically restart the OHS.
- The death of the OHS will be detected by an OPMN process, and that OPMN process will automatically restart the OHS.
- The death of the OHS will be detected by the OHS on another node, and that process will update the Instance log files with an error message.
- The death of the OHS will be detected by the OHS on another node, and that process will automatically restart the OHS.

**Answer: D**

**Question: 149**

Under what conditions does the J2EE and Web Cache installation option of Oracle9iAS require an Infrastructure?

- This installation option never requires an Infrastructure.
- This installation option always requires an Infrastructure.
- This installation option requires an Infrastructure if Web Caches need to be implemented.
- This installation option requires an Infrastructure if Single Sign-On needs to be implemented.
- This installation option requires an Infrastructure if Web Cache clusters need to be implemented.

<b>Exam Name:</b>	Oracle9iAS: Basic Administration		
<b>Exam Type:</b>	Oracle		
<b>Exam Code:</b>	1Z0-301	<b>Total Questions:</b>	157

**Answer: D**

**Question: 150**

During the installation, you can choose to install Oracle9iAS Application Server. The Oracle9iAS installation types are organized hierarchically. Not all answers reflect an installation type. Choose the Oracle9iAS installation type that includes all the other installation types.

- A. Oracle9iAS Portal
- B. J2EE and Web Cache
- C. Portal and Wireless
- D. Business Intelligence and Forms
- E. Oracle9iAS Containers for J2EE (OC4J)

**Answer: D**

**Question: 151**

Which directive enables mod\_plsql to process requests?

- A. SetHandler
- B. AllowOverride
- C. PlsqlLogEnable
- D. PlsqlDatabaseName

**Answer: A**

**Question: 152**

The default administration port for Oracle9iAS Web Cache is \_\_\_\_\_.

- A. 80
- B. 7777
- C. 4000
- D. 1521

**Answer: C**

**Question: 153**

Which three statements are correct about communication in the OID architecture? (Choose three.)

- A. The OID LDAP server communicates with the OID replication server using LDAP.
- B. Oracle Directory Manager communicates with the OID instance using Net Services.
- C. An LDAP client can communicate with OID using LDAP, LDAP with SSL, or Net Services.
- D. The Oracle Control Utility communicates with the Oracle database using Net Services.
- E. The LDAP server process communicates with the OID Monitor using the operating system inter-process protocol.
- F. The LDAP server process communicates with the OID Control Utility using the operating system inter-process protocol.

**Answer: A, D, E**

**Question: 154**

You installed Oracle9iAS Infrastructure on one machine. You are asked to install a second Oracle9iAS Infrastructure instance. Your company wants to use the already existent and configured Oracle Internet Directory from the first installation. Which three statements are true about installation of the second instance? (Choose three.)



<b>Exam Name:</b>	<b>Oracle9iAS: Basic Administration</b>		
<b>Exam Type:</b>	<b>Oracle</b>		
<b>Exam Code:</b>	<b>1Z0-301</b>	<b>Total Questions:</b>	<b>157</b>

- A. You need to enter the username and the password of Oracle Internet Directory administrator.
- B. You need to enter the dba username and password to use the existent Oracle9iAS metadata repository.
- C. You can avoid configuring Oracle9iAS metadata repository and Oracle9iAS Single Sign-On Server during the second installation.
- D. You can avoid configuring Oracle Internet Directory and Oracle9iAS Single Sign-On Server during the second installation.
- E. You need to provide the hostname and the port number of the existent Oracle9iAS metadata repository.
- F. You need to provide the hostname and the port number of the existent Oracle Internet Directory.

**Answer: A, D, F**

**Question: 155**

You want to ensure that the Selfserve (PL/SQL) procedure from the EMP package of HR schema in the PROD database is accessed by browser clients without having to specify the schema, package, or procedure name in the URL. Which directive will satisfy this requirement?

- A. PlsqlDefaultPage HR.Selfserve
- B. PlsqlDefaultPage EMP.Selfserve
- C. PlsqlDefaultPage PROD.HR.Selfserve
- D. PlsqlDefaultPage HR.EMP.Selfserve

**Answer: D**

**Question: 156**

Which configuration file contains only include statements for configuration files and comments?

- A. oc4j.conf
- B. httpd.conf
- C. jserv.conf
- D. oracle\_apache.conf

**Answer: D**

**Question: 157**

A document is invalidated in the Web Cache with the Action set to Immediate. Which statement is true?

- A. The document will be immediately reloaded into the cache.
- B. The document will remain in the cache and will be reloaded when it is requested again.
- C. The document will be removed from the cache and will be reloaded when it is requested again.
- D. The document will be removed from the cache and will not be reloaded into the cache, even if it is requested again.

**Answer: C**

**End of Document**